



**Violetta Tudorache**

+40 729 005 624

contact@blissimobiliare.ro  
(mailto:contact@blissimobiliare.ro)

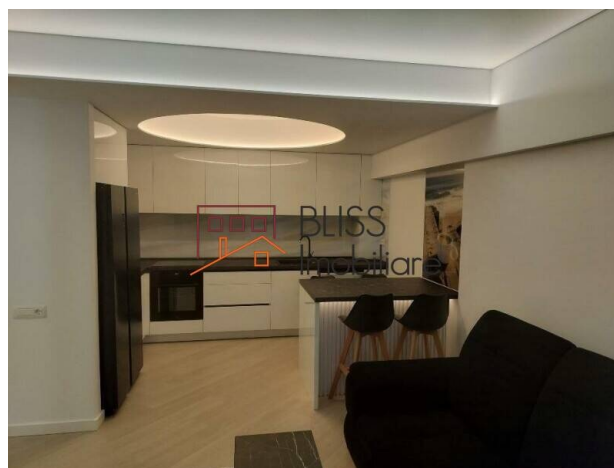
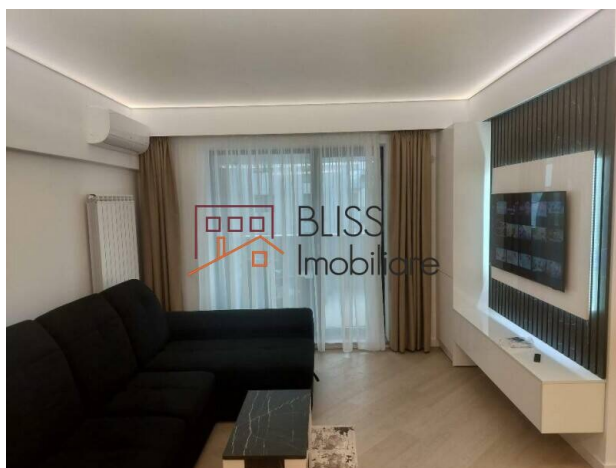
Updated on 17 November 2025

## 2-Bedroom Apartment Fully Furnished With Balcony And Parking

**1,150 EUR/ month**

Web Reference  
**#143260**

📍 Cortina North, Campul Pipera Bucuresti,  
Bucharest / Ilfov



<https://www.blissimobiliare.ro/index.php/en/apartment-2-bedrooms-for-rent-aviatiei-promenada-mall-metro-pipera-bucharest-ilfov-143260> (<https://www.blissimobiliare.ro/index.php/en/apartment-2-bedrooms-for-rent-aviatiei-promenada-mall-metro-pipera-bucharest-ilfov-143260>)

### Description

This elegant 3-room apartment is located in the upscale Cortina North residential complex, in northern Bucharest's highly desirable Aviației - Pipera area. Designed for those who appreciate comfort, privacy, and premium details, the property combines natural light, a spacious layout, and a spectacular panoramic terrace.

## Located In One Of The Most Desired Residential Areas Of Bucharest

### Layout and ambiance:

The spacious living room is filled with natural light, creating an inviting and sophisticated atmosphere.

There are two generous bedrooms, designed for rest and relaxation, featuring quality finishes and a calming ambiance.

The apartment includes two modern bathrooms, both finished to a high standard with premium fixtures.

The fully equipped kitchen features a contemporary design that balances functionality with modern style.

A large panoramic terrace offers open views and is perfect for quiet evenings or stylish gatherings.

**Features and facilities:**

The apartment is located in a secure modern building with a limited number of units, ensuring privacy and peace.

It includes an underground parking space (level -2), located within the residential compound.

The high-end finishes and thoughtful layout support a refined and comfortable urban lifestyle.

**Area and accessibility:**

Located in the heart of the Aviației – Promenada – Pipera area, the property offers immediate access to business centers, Promenada Mall, Aurel Vlaicu metro station, top restaurants, international schools, and parks.





This apartment is an ideal option for professionals, expats, or families looking for a premium residence in a safe and well-developed neighborhood.



Property details

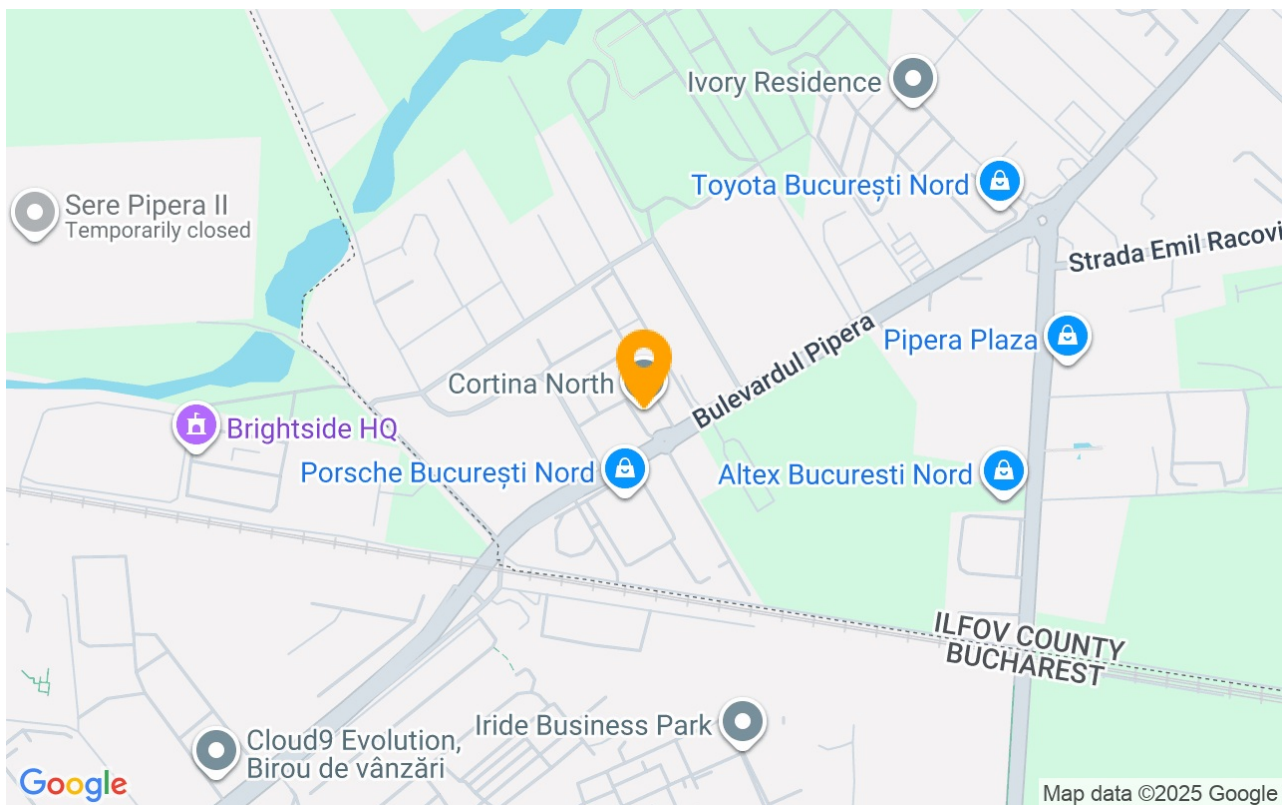
Rooms no.	3
Useable surface	76m²
Constructed surface	93m²
Apartment type	Apartment
Type of rooms	Independent
Type of comfort	Comfort 1
Bedrooms no.	2
Kitchens no.	1
Bathrooms no.	2
Building type	Block
Year built	2025
Config	1S+P+10
Floor	5
Balconies no.	1
State	Finished
Elevator	Yes
Parking inside	1
From developer	No

Amenities

-  Equipped kitchen
-  Dishwasher
-  Furnished
-  Private heating



## Location



## Photos

