



Violetta Tudorache

+40 729 005 624

contact@blissimobiliare.ro
(mailto:contact@blissimobiliare.ro)

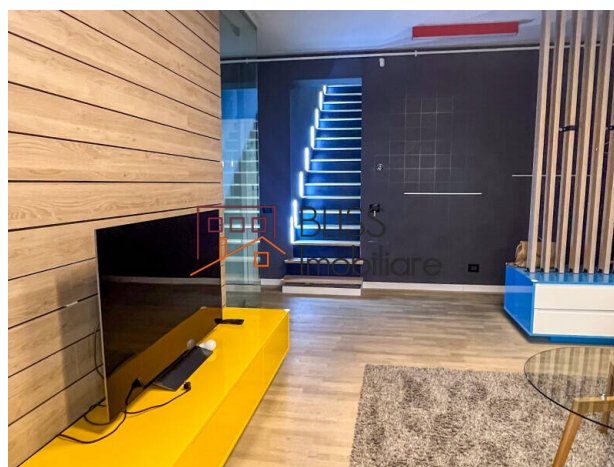
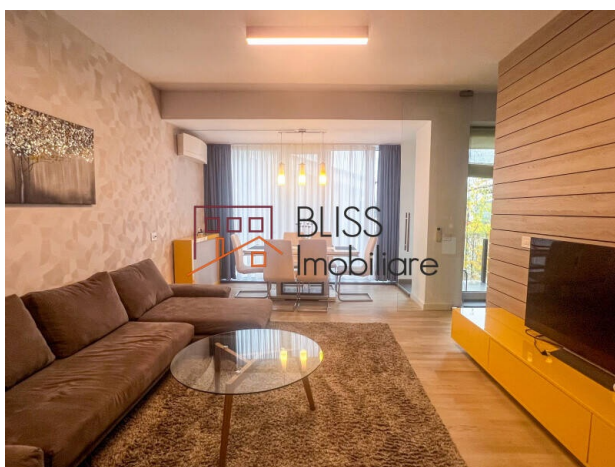
Updated on 9 December 2025

5-Room Duplex Fully Furnished With Large Terrace And Parking

📍 Doina Residence, Baneasa Padure, Bucharest
/ Ilfov

1,950 EUR/ month

Web Reference
#143219



<https://www.blissimobiliare.ro/index.php/en/apartment-duplex-3-bedrooms-for-rent-iancu-nicolae-pipera-bucharest-ilfov-143219> (<https://www.blissimobiliare.ro/index.php/en/apartment-duplex-3-bedrooms-for-rent-iancu-nicolae-pipera-bucharest-ilfov-143219>)

Description

This spacious and elegant 5-room duplex is located in a green and quiet area of Pipera, near Băneasa Forest and just steps away from Bucharest's top international schools. With 160 sqm of usable space, the property offers premium finishes, modern design, and a functional layout ideal for families or expats seeking comfort in a refined setting.

Located In One Of The Most Desired Residential Areas Of Bucharest

Layout and functional spaces:

Spread over two levels, the duplex includes a generous living room, three bright bedrooms, a dedicated office, a home cinema room, and a large walk-in dressing.

The day area is completed by a glass-enclosed, fully equipped kitchen and a pantry for extra storage.

There are three modern bathrooms, one of which is equipped with a clothes dryer.

A large 20 sqm terrace offers the perfect spot for outdoor relaxation, while a smaller 3 sqm terrace adds extra space and light.

Features and comfort:

The apartment is fully furnished and equipped, with premium finishes and carefully selected furniture.

The layout allows flexibility for various living arrangements, including remote work and family life.

A private underground parking space is included, ensuring safety and convenience year-round.

Area and accessibility:

Located in one of the most sought-after residential areas in northern Bucharest, the property benefits from proximity to international schools, green spaces, restaurants, supermarkets, and shopping centers such as Băneasa Shopping City.

Quick access to Băneasa Forest adds a unique benefit for residents seeking peace and nature close to the city.

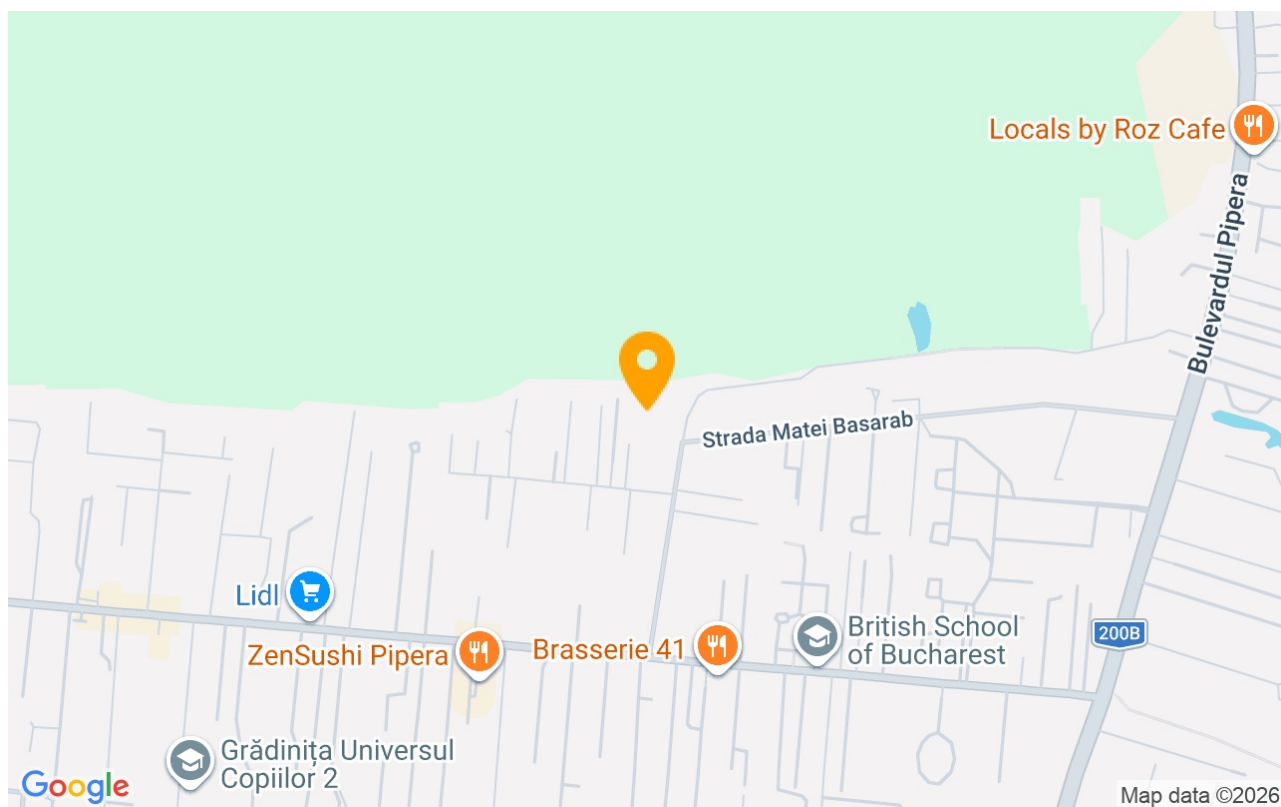
Property details

Rooms no.	5
Useable surface	111m²
Constructed surface	160m²
Apartment type	Duplex apartment
Type of rooms	Independent
Type of comfort	Deluxe
Bedrooms no.	3
Kitchens no.	1
Bathrooms no.	3
Building type	Block
Year built	2014
Config	1S+P+3
Floor	2
Balconies no.	2
State	Finished
Elevator	Yes
Parking inside	1

Amenities

-  Equipped kitchen
-  Furnished
-  Private heating
-  Air conditioning

Location



Photos

