



Violetta Tudorache

+40 729 005 624

contact@blissimobiliare.ro
(mailto:contact@blissimobiliare.ro)

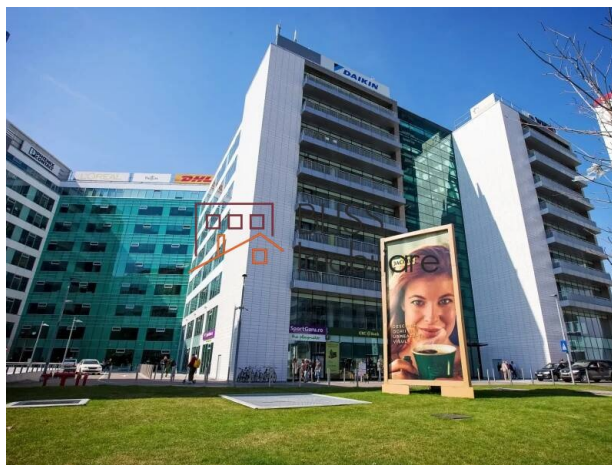
Updated on 9 October 2025

All-Inclusive Offices in AFI Park Floreasca

3,431 EUR +VAT / month

Web Reference
#143069

Regus Floreasca AFI Park Floreasca (Serviced offices), Floreasca Business Park Promenada Mall, Bucharest



<https://www.blissimobiliare.ro/index.php/en/office-space-for-rent-aviatiei-promenada-mall-metro-pipera-bucharest-143069> (<https://www.blissimobiliare.ro/index.php/en/office-space-for-rent-aviatiei-promenada-mall-metro-pipera-bucharest-143069>)

Description

Regus Floreasca Plaza - AFI Park Floreasca

Prime location with global flexibility

Premium flexible offices for teams of up to 9 people

Located within the modern AFI Park Floreasca - Floreasca Plaza complex, Regus offers fully serviced private offices in units 2021, 2022, and 2042. With a capacity of up to 9 people, these turnkey offices are fully furnished and ready for immediate use, providing the ideal solution for dynamic companies seeking a professional and efficient workspace in one of Bucharest's most vibrant business areas.

All-inclusive package for a complete workplace

Tenants benefit from a comprehensive all-inclusive package designed to ensure comfort and productivity from day one:

- 24/7 secure access to the office, center, and building
- Modern ergonomic furniture, ready for immediate use
- Utilities included: electricity, water, gas, and air conditioning

- Regular cleaning and technical maintenance
- High-speed Wi-Fi internet throughout the building
- 24/7 security and monitoring
- Administrative and basic reception support, including mail handling and visitor welcoming
- Global access to Regus & Spaces business lounges, in more than 4,500 locations worldwide

Additional services available

For added flexibility, tenants can access extra services tailored to their needs:

- Fully equipped kitchens with coffee, tea, water, and tableware
- Multifunctional equipment for printing, scanning, and copying
- Meeting room and private office bookings for business appointments
- 2 hours/day complimentary meeting room use (for up to 4 people, subject to same-day booking, in Regus centers)
- Courier services and extended administrative support
- Underground parking available on-site
- Support for registered office and branch establishment

Regus also offers the option to establish a registered office or branch address at the Floreasca Plaza location. The center's team provides support with the required documentation for the Trade Register and manages mail services, delivering correspondence directly to the tenant's office according to their protocol.

Secure access and flexibility

Each team member receives a personalized access card, valid for entry into the building, center, and private office. Access is fully secured and available 24/7, while the building is monitored with professional security, ensuring both safety and flexibility for all tenants.





The ideal choice for modern, growing companies

Combining fully furnished private offices, all-inclusive services, and access to a global business network, Regus Floreasca Plaza – AFI Park Floreasca is the perfect choice for companies seeking a modern, secure, and hassle-free workspace in a prime business district of Bucharest.

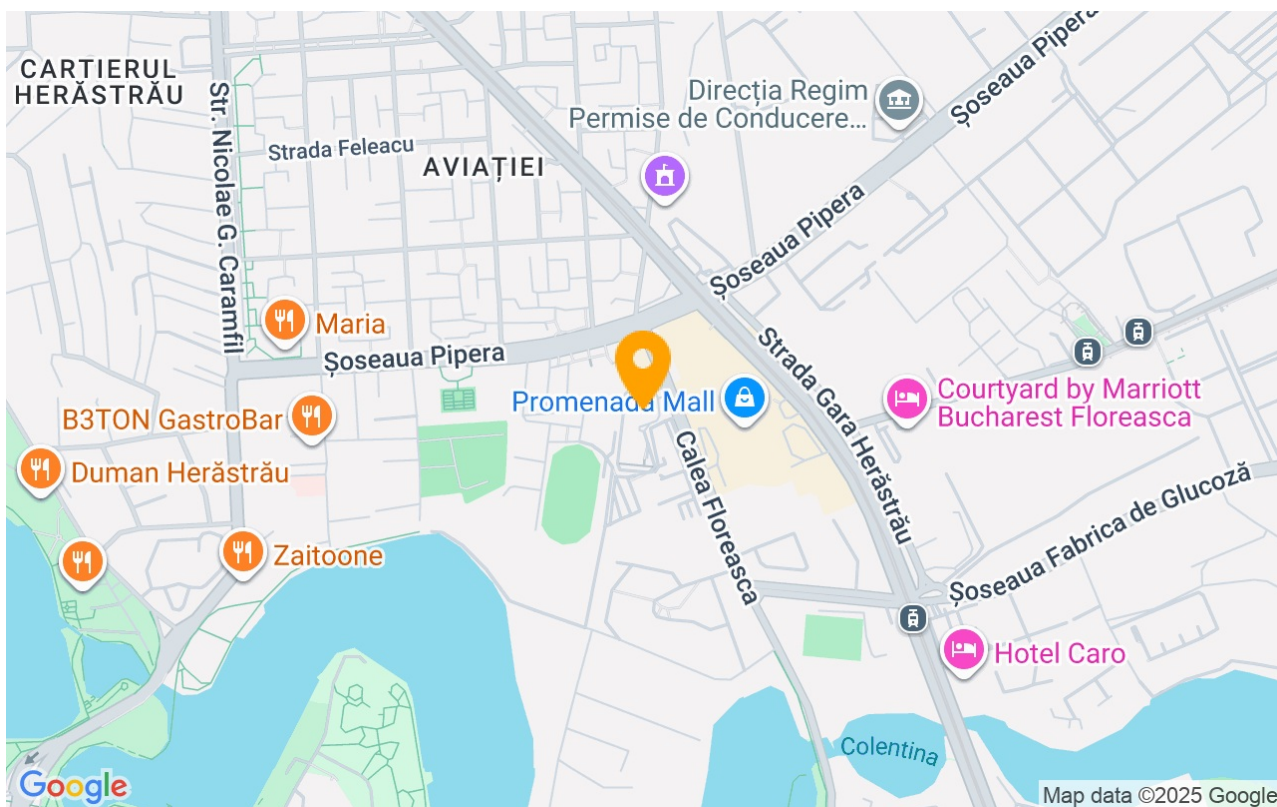
Property details

Constructed surface	33m²
Building type	Block
Year built	2009
State	Finished
Elevator	Yes
Parking inside	5

Amenities

-  Furnished
-  Building heating
-  Suitable for office
-  Air conditioning

Location



Photos

