



Violetta Tudorache

+40 729 005 624

contact@blissimobiliare.ro
(mailto:contact@blissimobiliare.ro)

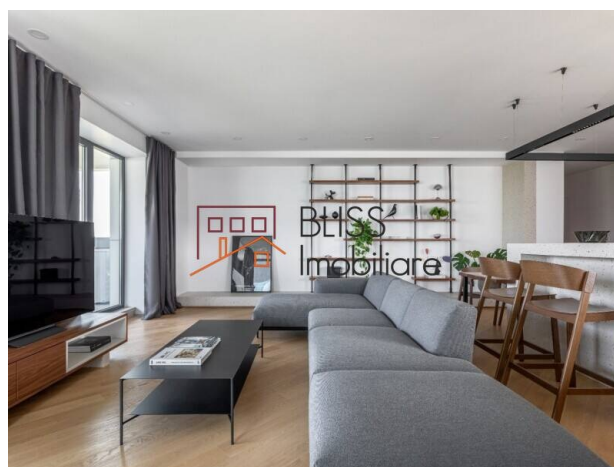
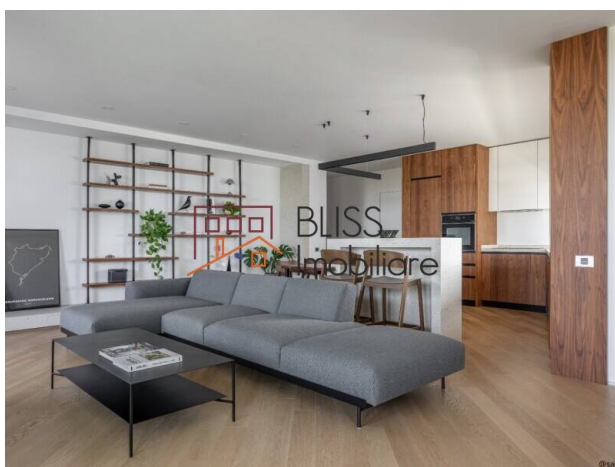
Updated on 11 September 2025

Luxury 2-Bedroom Apartment in Aviatiei Tower - 106 sqm

680,000 EUR

Web Reference
#143048

Aviatiei Tower, Floreasca Business Park
Promenada Mall, Bucharest



<https://www.blissimobiliare.ro/index.php/en/apartment-2-bedrooms-for-sale-aviatiei-promenada-mall-metro-pipera-bucharest-143048> (<https://www.blissimobiliare.ro/index.php/en/apartment-2-bedrooms-for-sale-aviatiei-promenada-mall-metro-pipera-bucharest-143048>)

Description

2-Bedroom Apartment in Aviatiei Tower - 106 sqm + 2 Terraces, Premium Furnished, 2 Underground Parking Spaces

Prime location in North Bucharest – near Herăstrău Park & Promenada Mall

Experience modern elegance in this stunning 2-bedroom apartment located in Aviatiei Tower, one of the most sought-after residential complexes in the north of Bucharest. With a usable area of 106 sqm and two spacious terraces (14 sqm and 20 sqm), this property perfectly combines comfort, space, and premium finishes.

Layout and Premium Features

- Usable area: 106 sqm
- Bright and spacious living room with direct access to the terrace
- Fully furnished and equipped kitchen
- Master bedroom with dressing area and en-suite bathroom
- Secondary bedroom, ideal for children or home office

- 2 modern bathrooms with elegant finishes
- Two sunny terraces of 14 sqm and 20 sqm, perfect for relaxation
- High-quality furniture and appliances
- Air conditioning in every room, premium finishes

Facilities and Benefits

- 2 underground parking spaces included
- Modern residential complex with secure access and impeccably maintained common areas
- Fast elevators and premium infrastructure
- Fully furnished and equipped apartment, ready to move in

Prime Location - Aviatiei / North Bucharest





Located in one of the city's most dynamic areas, this apartment offers quick access to:

- Herăstrău Park and Promenada Mall
- Fine restaurants, cafés, and fitness centers
- Business hub in Barbu Văcărescu – Pipera
- Aurel Vlaicu metro station, DN1, and Otopeni Airport

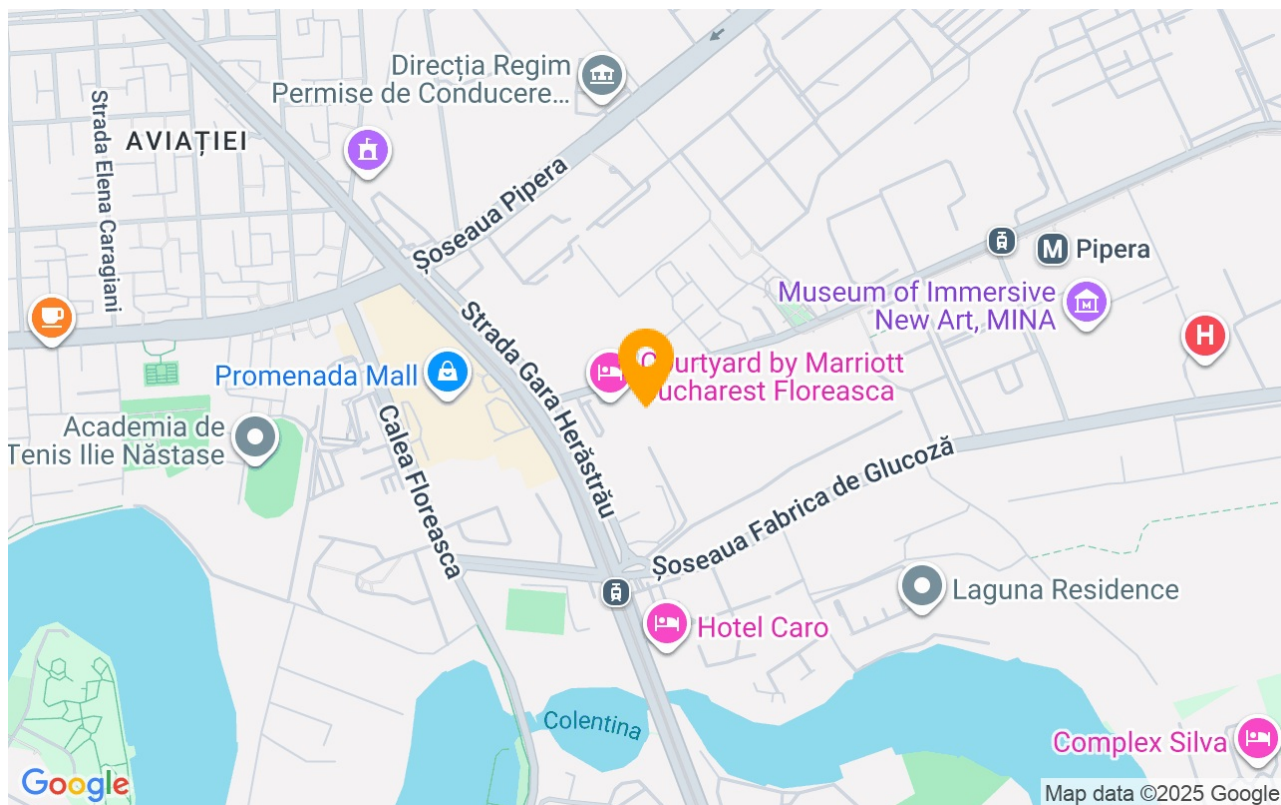
Property details

Rooms no.	3
Useable surface	107m²
Constructed surface	141m²
Apartment type	Apartment
Type of rooms	Independent
Bedrooms no.	2
Kitchens no.	1
Bathrooms no.	2
Building type	Block
Year built	2021
Config	2S+P+11
Floor	8
Balconies no.	2
State	Finished
Elevator	Yes
Parking inside	2

Amenities

-  Equipped kitchen
-  Furnished
-  Suitable for office
-  Air conditioning

Location



Photos

