



Violetta Tudorache

+40 729 005 624

contact@blissimobiliare.ro
(mailto:contact@blissimobiliare.ro)

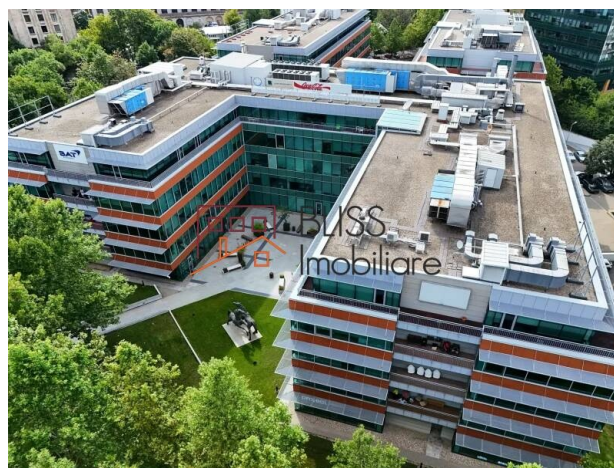
Updated on 6 September 2025

Office Space - Bucharest Business Park, 1st Floor, 329.99 sqm

📍 Bucharest Business Park, Presei Libere,
Bucharest

5,444 EUR +VAT / month

Web Reference
#142983



<https://www.blissimobiliare.ro/index.php/en/office-space-for-rent-presei-libere-bucharest-142983>
(<https://www.blissimobiliare.ro/index.php/en/office-space-for-rent-presei-libere-bucharest-142983>)

Description

Office Space - Bucharest Business Park

Prime location on DN1, near Piața Presei and Herăstrău Park

1st Floor | 329.99 sqm (part of 587.3 sqm) | Available immediately

Located within Bucharest Business Park, one of the most established and reputable office projects in northern Bucharest, this 329.99 sqm space on the 1st floor is available for lease. It is part of a larger 587.3 sqm unit and has been divided to meet the needs of medium-sized companies looking for a flexible and representative headquarters.

An Efficient and Versatile Space

The 329.99 sqm office is designed to respond to the requirements of modern companies. Its open-plan configuration allows easy customization for modern and ergonomic workplaces, while also offering the possibility of adding private offices, meeting rooms, and collaborative areas.

Thanks to its full-glass façade, the unit benefits from abundant natural light, creating a bright and motivating atmosphere. The interior includes raised floors for flexible IT and electrical cabling and suspended ceilings fitted with LED lighting and acoustic solutions for optimal comfort.

Building and Technical Specifications

Bucharest Business Park meets Class A standards and offers tenants:

- High-performance HVAC systems, with zoned controls
- Building Management System (BMS) for energy efficiency
- 24/7 security and reception, with controlled access and CCTV
- Backup generators ensuring uninterrupted operations
- Underground and surface parking for employees and visitors
- Modern high-speed elevators for easy access

Amenities for Tenants

The business park provides more than just office space. Tenants have access to on-site restaurants, cafés, retail units, green outdoor areas, and fully equipped conference rooms suitable for corporate events, trainings, and client presentations.

Strategic Location

Situated on Bucharest-Ploiești Road (DN1), in close proximity to Piața Presei Libere and Herastrau Park, the building enjoys an excellent location:

- Direct car access to both downtown Bucharest and Henri Coandă International Airport
- Extensive public transport connections – bus and tram lines nearby
- Fast access to other northern business hubs and main city arteries

This ensures convenient commuting for employees and easy access for business partners.

Corporate Image and Prestige

Being part of Bucharest Business Park gives companies more than a workspace – it gives them visibility, credibility, and affiliation with a strong business community. Recognized as one of the city's most reliable and well-managed business parks, it is an excellent choice for organizations seeking to strengthen their corporate image.

Conclusion

The 329.99 sqm office space on the 1st floor of Bucharest Business Park is the perfect solution for companies that want a modern, efficient, and representative headquarters in northern Bucharest.

With its flexible layout, Class A standards, premium amenities, and prime location, this office provides the ideal framework for professional growth and long-term success.

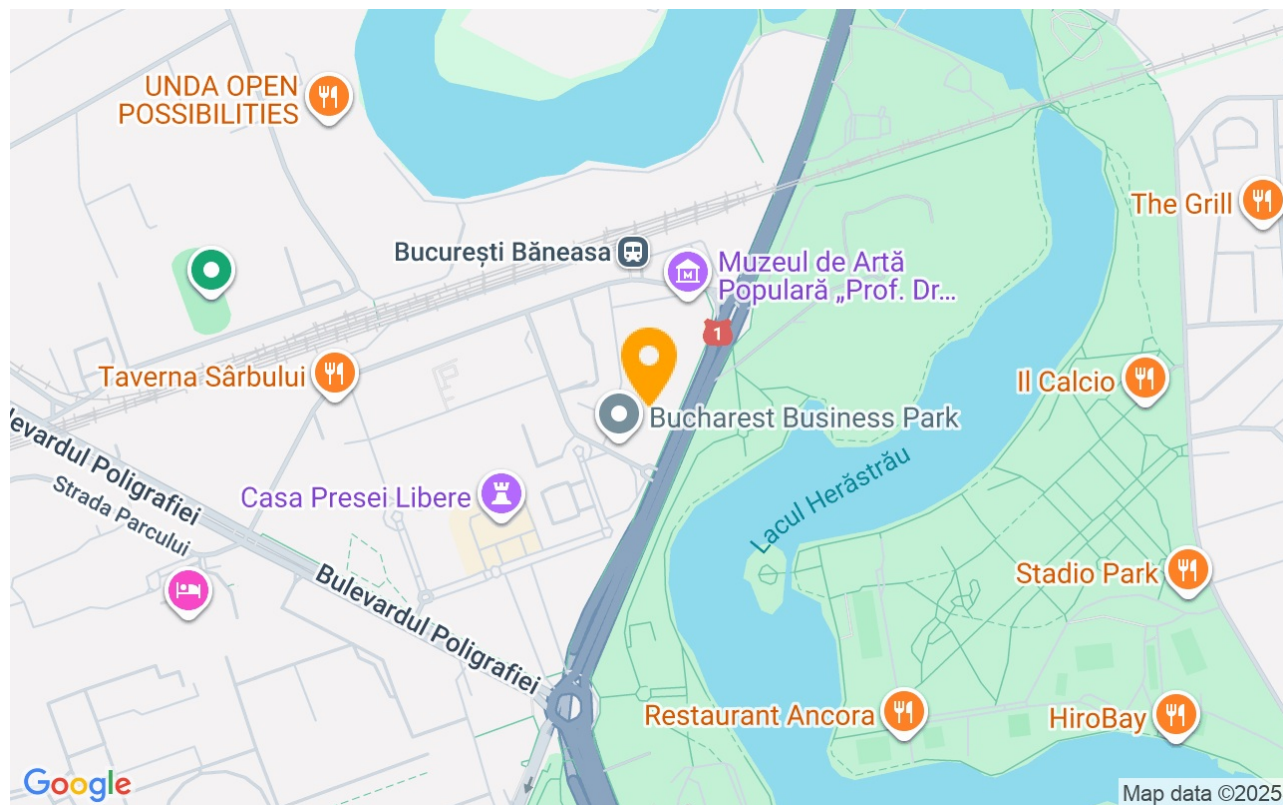
Property details

Constructed surface	330m²
Building type	Block
Year built	2005
State	Finished
Elevator	Yes
Common service charges	1814.00 EUR

Amenities

-  Not furnished
-  Building heating
-  Suitable for office
-  Air conditioning

Location



Photos

