



Violetta Tudorache

+40 729 005 624

contact@blissimobiliare.ro
(mailto:contact@blissimobiliare.ro)

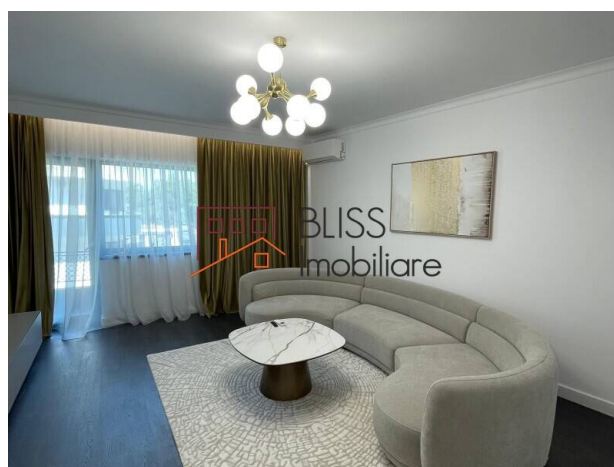
Updated on 29 January 2026

2-Bedroom Apartment with Park View - Floreasca

405,000 EUR

Web Reference
#142593

📍 Dorobanti Beller, Bucharest



<https://www.blissimobiliare.ro/index.php/en/apartment-2-bedrooms-for-sale-dorobanti-primaverii-kiseleff-aviatorilor-bucharest-142593> (<https://www.blissimobiliare.ro/index.php/en/apartment-2-bedrooms-for-sale-dorobanti-primaverii-kiseleff-aviatorilor-bucharest-142593>)

Description

We invite you to discover a bright and spacious 2-bedroom apartment with 90 sqm of usable space (114 sqm total), located on the 1st floor of a solid 1965 building, right on Aviator Jean Texier Street – one of the most beautiful and green streets in Floreasca, directly across from Floreasca Park.

Premium Comfort and Elegant Design

Fully renovated in 2025 with great attention to detail, the apartment features premium finishes, brand-new electrical and plumbing installations, modern windows, underfloor heating, and its own central heating system – ensuring comfort all year round.

What you'll find here:

- Spacious, sun-filled living room with direct access to one of the two large balconies – perfect for your morning coffee or a relaxing evening.
- Master bedroom furnished with Rovere pieces, premium mattress, and generous wardrobe space.
- Second bedroom, ideal as a home office or guest room.
- Fully enclosed kitchen, fully furnished and equipped – including oven, hob, hood, and refrigerator.
- Modern bathroom with walk-in shower and high-quality sanitary ware.
- Electric exterior shutters with remote control on all windows.
- Smart TV, air conditioning, internet, and cable TV ready to use.

- Rovere furniture and a contemporary interior design.

Why you'll love this home:





Located in a premium area, the apartment offers an unobstructed, direct view of Floreasca Park and quick access to charming cafés, restaurants, public transport, and shopping areas. It's the perfect balance between the park's peaceful atmosphere and the vibrant energy of the neighborhood.

If you're looking for an elegant, freshly renovated apartment with all modern comforts and an exceptional location, this could be your perfect "home."

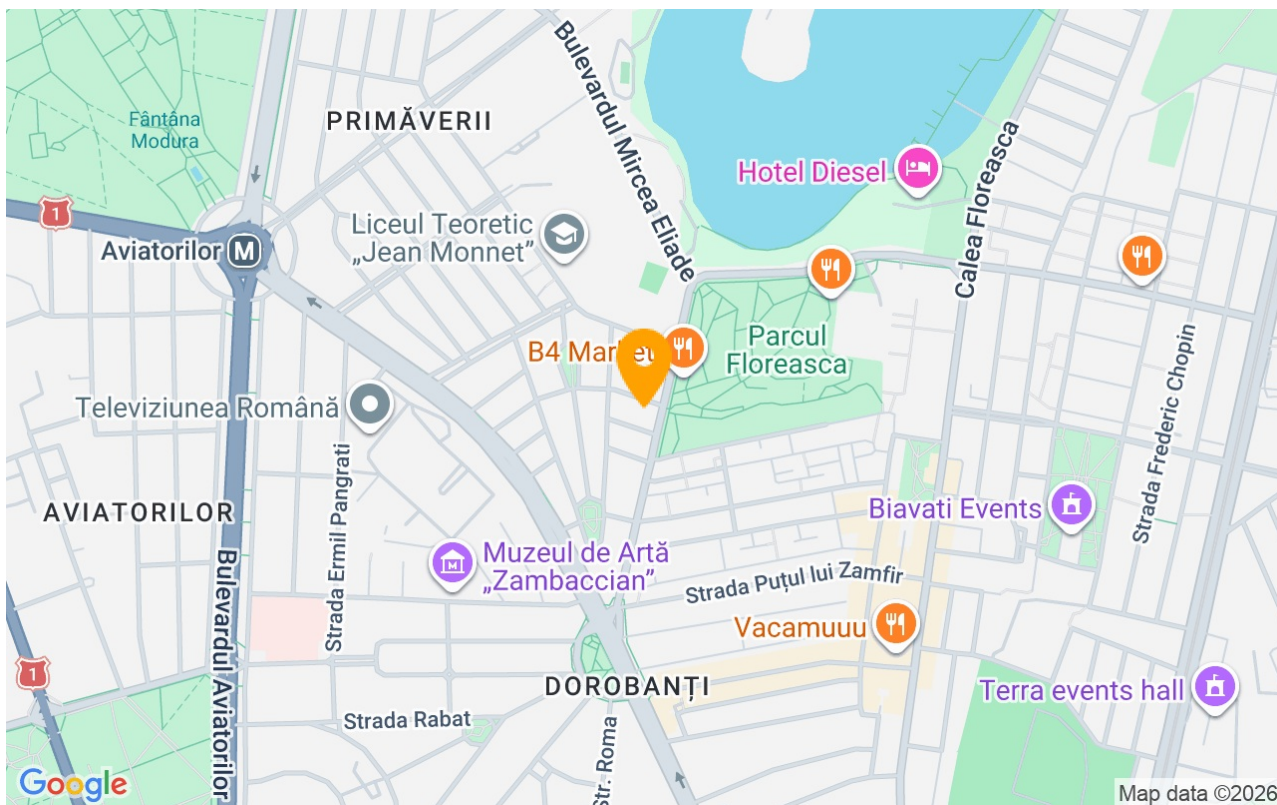
Property details

Rooms no.	3
Useable surface	90m²
Constructed surface	114m²
Apartment type	Apartment
Type of rooms	Independent
Type of comfort	Deluxe
Bedrooms no.	2
Kitchens no.	1
Bathrooms no.	1
Building type	Block
Year built	1960
Config	P+4
Floor	1
Balconies no.	2
State	Finished
Elevator	No

Amenities

-  Equipped kitchen
-  Furnished
-  Private heating
-  Air conditioning

Location



Photos

