



Violetta Tudorache

+40 729 005 624

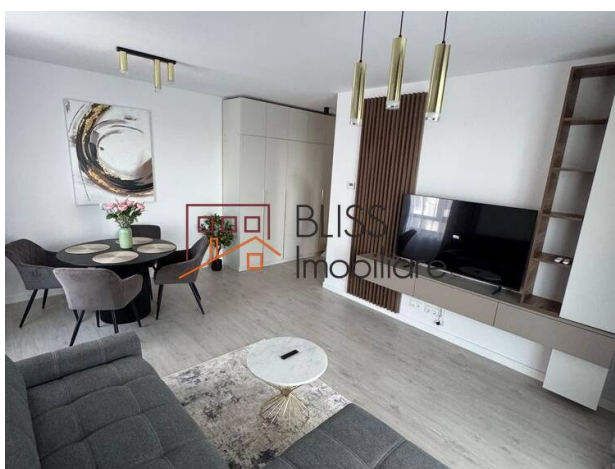
contact@blissimobiliare.ro
(mailto:contact@blissimobiliare.ro)

Updated on 28 August 2025

1-Bedroom Apartment with Included Parking Space

📍 Greenfield Teilor, Baneasa Padure, Bucharest

Web Reference
#141731



<https://www.blissimobiliare.ro/index.php/en/apartment-1-bedroom-for-rent-iancu-nicolae-pipera-bucharest-141731> (<https://www.blissimobiliare.ro/index.php/en/apartment-1-bedroom-for-rent-iancu-nicolae-pipera-bucharest-141731>)

Description

Comfort and Style in a Premium Residential Complex

Close To International Schools And Baneasa Shopping City

Located in the renowned Greenfield Băneasa residential complex, this spacious 1-bedroom apartment offers the perfect combination of tranquility and modern living, surrounded by lush forest and a peaceful environment.

Positioned on the 8th floor of a 10-story building with 2 elevators, the apartment covers 70 sqm and is thoughtfully divided for maximum functionality:

- Bright and spacious living room with access to a private terrace
- Fully equipped kitchen with ample storage
- Cozy bedroom ideal for rest and relaxation
- Modern bathroom with quality finishes
- Entrance hallway with storage space
- Open terrace with panoramic views
- Private parking space included

Greenfield Complex - Premium Amenities in a Natural Setting

Greenfield Băneasa is one of the most desirable residential areas in northern Bucharest, surrounded by the Băneasa Forest and designed for a high quality of life. The complex offers:

- Indoor semi-Olympic pool and outdoor swimming pool
- Children's playgrounds
- Generous green spaces for relaxation
- On-site supermarkets, pharmacy, restaurants, and cafés
- Medical offices and wellness centers
- 24/7 security and administration services
- Modern infrastructure with street lighting and sewage system

Location: Băneasa – Iancu Nicolae, Pipera





This apartment is perfectly located in the upscale Băneasa – Iancu Nicolae area, within the Pipera district, providing quick access to:

- International schools (British School, American School)
- Băneasa Shopping City and Jolie Ville
- Herăstrău Park and the Zoo
- Henri Coandă International Airport
- Public transport: Bus line 203 nearby

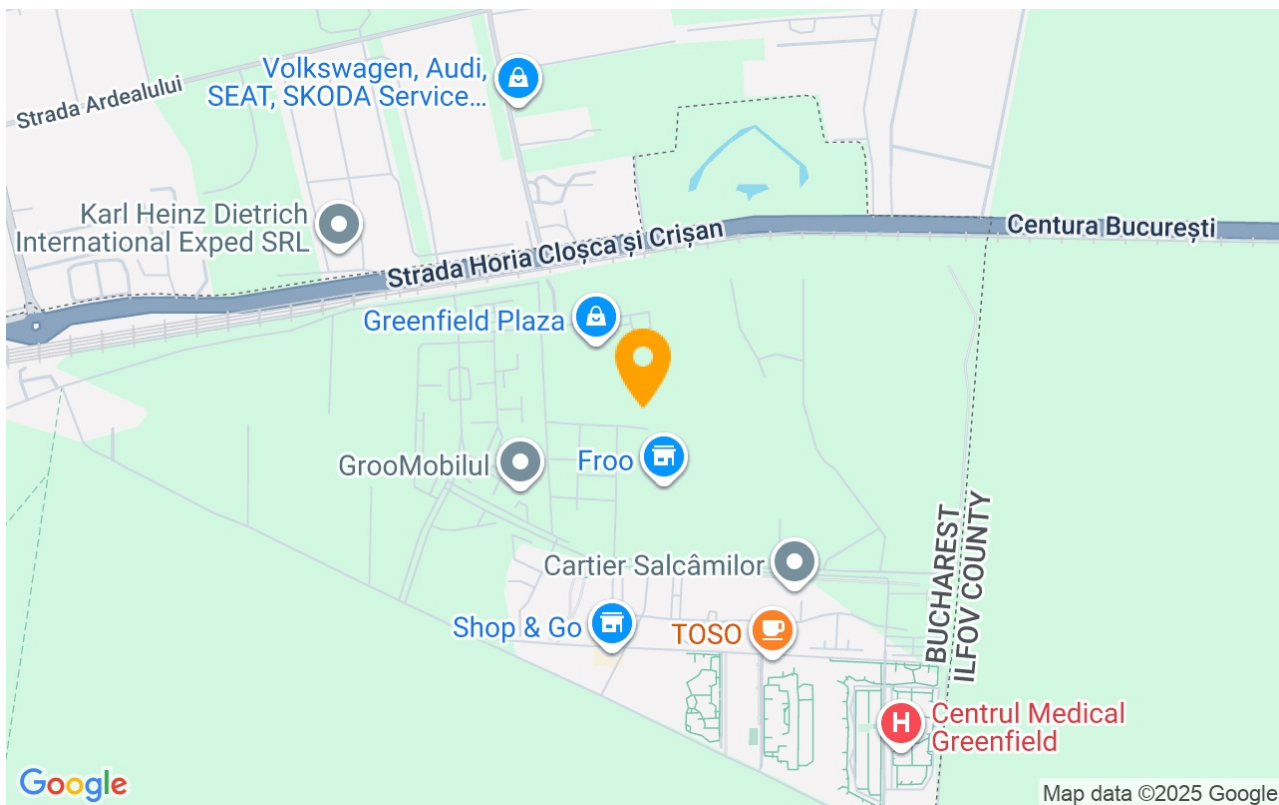
Property details

Rooms no.	2
Useable surface	60m²
Constructed surface	70m²
Apartment type	Apartment
Type of rooms	Independent
Type of comfort	Comfort 1
Bedrooms no.	1
Kitchens no.	1
Bathrooms no.	1
Building type	Block
Year built	2023
Config	P+10
Floor	8
Balconies no.	1
State	Finished
Elevator	Yes
Parking outside	1
From developer	No

Amenities

-  Equipped kitchen
-  Furnished
-  Building heating
-  Air conditioning

Location



Photos

