



Violetta Tudorache

+40 729 005 624

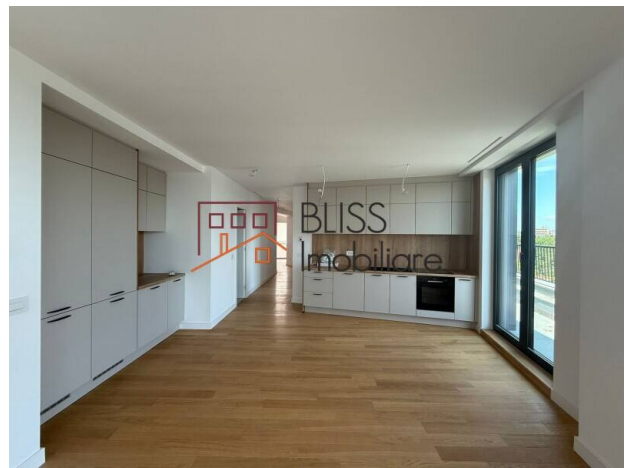
contact@blissimobiliare.ro
(mailto:contact@blissimobiliare.ro)

Updated on 4 June 2026

Duplex Penthouse with Panoramic Terraces

Web Reference
#141679

BRICKVILLE Residence, Iancu Nicolae Baneasa
Zoo, Bucharest / Ilfov



<https://www.blissimobiliare.ro/index.php/en/apartment-3-bedrooms-for-rent-iancu-nicolae-pipera-bucharest-ilfov-141679> (<https://www.blissimobiliare.ro/index.php/en/apartment-3-bedrooms-for-rent-iancu-nicolae-pipera-bucharest-ilfov-141679>)

Description

A Penthouse That Elevates Your Everyday Life

Experience Life at the Top – Style, Space, and Serenity

BrickVille | Spectacular Duplex Penthouse with 2 Terraces and 154 sqm of Living Space

If you've ever dreamed of living above it all — with space, natural light, privacy, and an effortless connection to nature — this two-level penthouse is exactly what you're looking for. With a generous 154 sqm of usable space and two stunning terraces of 43 sqm and 150 sqm, this home offers a rare combination of elegance, comfort, and outdoor freedom.

What Makes It Truly Special:

- 154 sqm of well-divided, bright living space over two floors
- 2 large terraces totaling nearly 200 sqm – one ideal for peaceful mornings, the other perfect for entertaining, urban gardening, or outdoor lounging
- Excellent location, with easy access from Erou Iancu Nicolae Street in a quiet, upscale neighborhood
- Duplex layout that brings the comfort of a house into a modern city apartment

BrickVille Features:

- Boutique residential complex, low-rise with a limited number of exclusive units
- Premium finishes, carefully selected for a refined lifestyle
- Underfloor heating, high-performance insulation, and top-quality windows
- Underground parking available with direct building access
- Over 50% of the land dedicated to green spaces, for a serene and healthy environment
- Select community, offering privacy and a sense of harmony

Location:


- Nestled on Drumul Potcoavei, just minutes away from:
- The American School of Bucharest
- Băneasa Shopping City
- Băneasa Park & Zoo
- Otopeni International Airport


This penthouse offers more than space – it offers freedom, elegance, and inspiration.
A home designed to elevate your lifestyle, inside and out.

Property details

Rooms no.	4
Useable surface	130m ²
Apartment type	Apartment
Type of rooms	Independent
Bedrooms no.	3
Kitchens no.	1
Bathrooms no.	2
Building type	Block
Year built	2024
Config	1S+P+3
Floor	3
Balconies no.	2
State	Finished
Elevator	Yes
Parking inside	1
From developer	No

Amenities

 Not furnished (Willing to furnish)

 Private heating

 Air conditioning

Location



Photos

