



Violetta Tudorache

+40 729 005 624

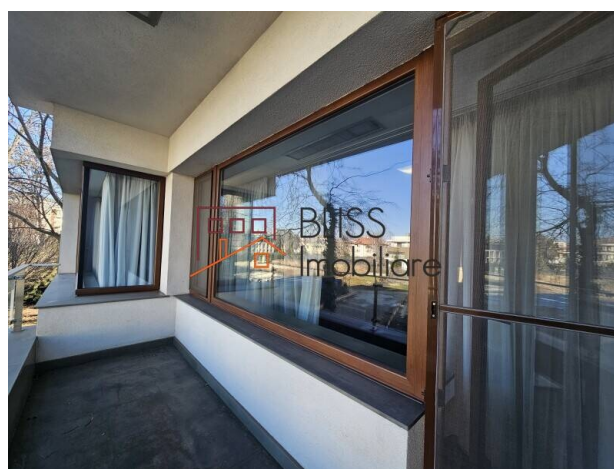
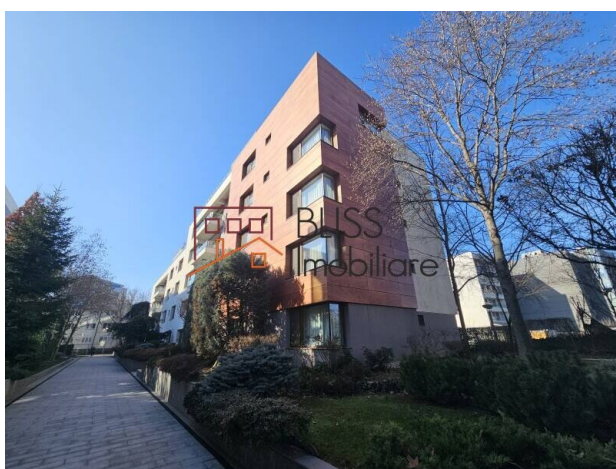
contact@blissimobiliare.ro
(mailto:contact@blissimobiliare.ro)

Updated on 13 June 2025

Modern 2-Bedroom Apartment Fully Furnished & Equipped

Barbu Delavrancea 63, Kiseleff, Bucharest

Web Reference
#125617



<https://www.blissimobiliare.ro/index.php/en/apartment-2-bedrooms-for-rent-dorobanti-primaverii-kiseleff-aviatorilor-bucharest-125617> (<https://www.blissimobiliare.ro/index.php/en/apartment-2-bedrooms-for-rent-dorobanti-primaverii-kiseleff-aviatorilor-bucharest-125617>)

Description

Located in one of the most prestigious areas of North Bucharest, this exquisite 2-bedroom apartment offers a perfect blend of comfort, style, and convenience. Fully furnished and equipped with high-quality finishes, the apartment features a closed kitchen, two bathrooms, a guest toilet, and a spacious balcony, ensuring a refined living experience.

Living in the Prestigious Kiseleff Area

Key Features:

- **Premium Location:** Situated in the exclusive Kiseleff area, known for its green spaces, historic charm, and proximity to business hubs.
- **Fully Furnished & Equipped:** Ready to move in with modern appliances and elegant furniture.
- **Closed Kitchen:** Perfect for those who enjoy home cooking in a private and stylish setting.
- **Two Bathrooms + Guest Toilet:** Designed for convenience and comfort.
- **Balcony:** A perfect retreat to enjoy the surrounding views.
- **Underground Parking:** Secure and convenient parking for residents.
- **24/7 Security:** Ensuring a safe and peaceful living environment.

International Community: Ideal for expats, entrepreneurs, and business professionals.

Kiseleff is one of Bucharest's most sought-after residential areas, offering a perfect blend of luxury, tranquility, and accessibility. With its tree-lined boulevards, historical landmarks, and upscale amenities, it provides an unmatched lifestyle for those seeking refinement and convenience.

Why Choose Kiseleff?






- **Green Spaces:** Close to Kiseleff Park and Herăstrău Park, perfect for outdoor activities and relaxation.
- **Cultural Hotspot:** Surrounded by museums, embassies, and fine dining establishments.
- **Excellent Connectivity:** Easy access to major business districts and international schools.
- **Upscale Amenities:** High-end shopping, gourmet restaurants, and premium wellness centers.

Whether you are an expat, entrepreneur, or business professional, this apartment in Kiseleff offers an unparalleled lifestyle in a high-end community.

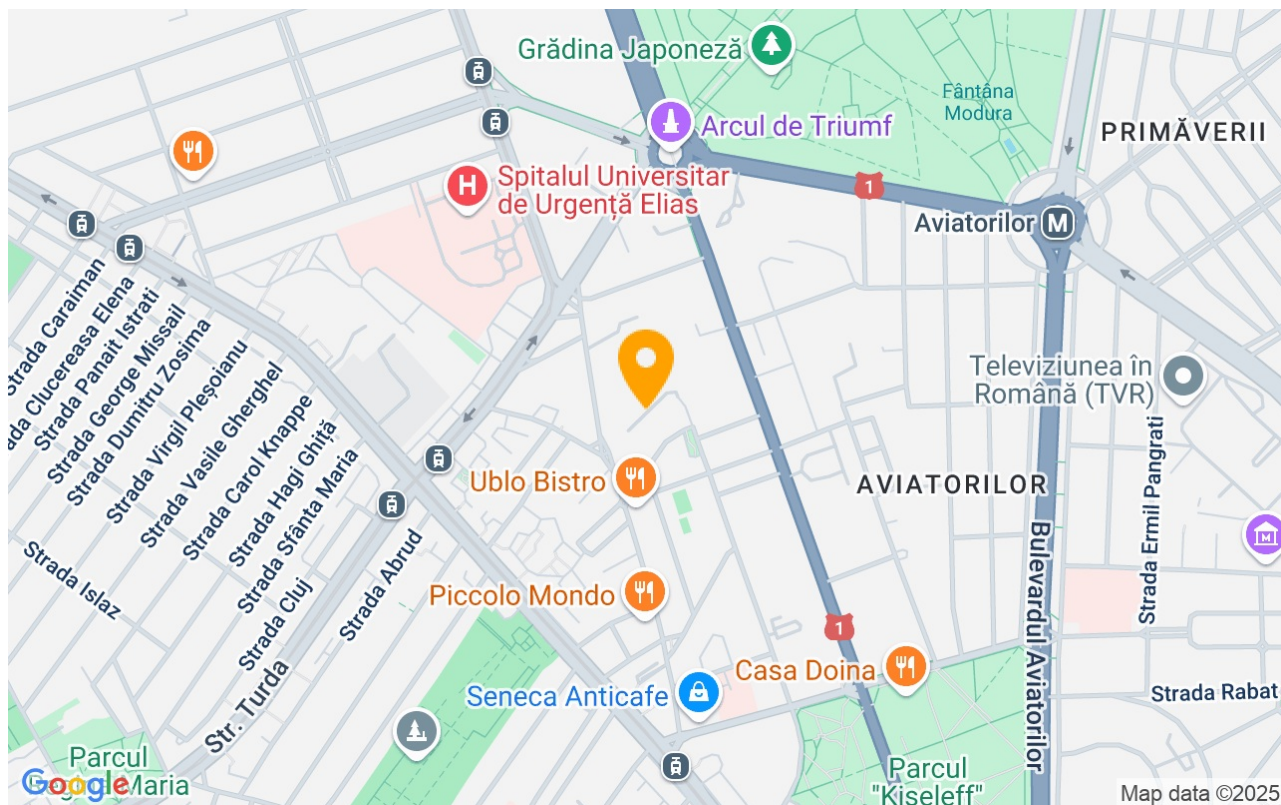
Property details

Rooms no.	3
Useable surface	131m²
Constructed surface	150m²
Apartment type	Apartment
Type of rooms	Independent
Type of comfort	Comfort 1
Bedrooms no.	2
Kitchens no.	1
Bathrooms no.	2
Toilets no.	1
Building type	Block
Year built	2010
Config	1S+P+5
Floor	1
Balconies no.	1
State	Finished
Elevator	Yes
Parking inside	1

Amenities

-  Equipped kitchen
-  Dishwasher
-  Furnished (Willing to take out)
-  Building heating
-  Air conditioning

Location



Photos

