



**Violetta Tudorache**

+40 729 005 624

contact@blissimobiliare.ro  
(mailto:contact@blissimobiliare.ro)

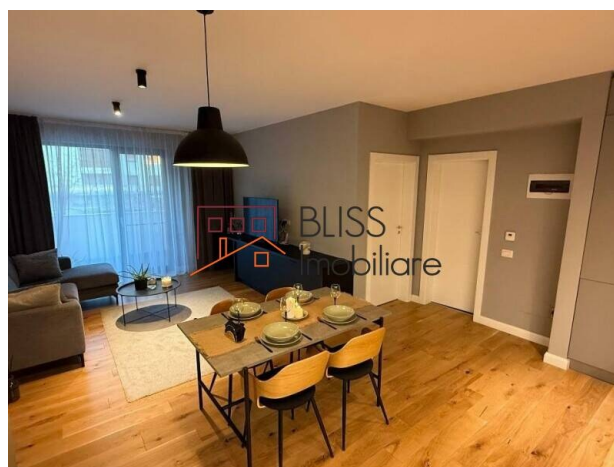
Updated on 18 May 2026

## Luxury 1-Bedroom Apartment - Terrace & Parking

**900 EUR/ month**

Web Reference  
**#125368**

Odyssey Baneasa, Baneasa Aerogarii,  
Bucharest



<https://www.blissimobiliare.ro/index.php/en/apartment-1-bedroom-for-rent-herastrau-nordului-bucharest-125368> (<https://www.blissimobiliare.ro/index.php/en/apartment-1-bedroom-for-rent-herastrau-nordului-bucharest-125368>)

### Description

**1-Bedroom Apartment in Odyssey Băneasa - 65 sqm, Luxury Furnished, Spacious Terrace & Parking**

**65 sqm | 1 Bedroom | Terrace | Luxury Furnished | Parking  
| 2021**

Refinement and Modernity in the Heart of Herăstrău - Aviației - Băneasa

We present an exceptional 1-bedroom apartment located on the 2nd floor of the Odyssey Băneasa residential complex, built in 2021, in one of the most exclusive areas in northern Bucharest. With an area of 65 sqm and an elegant design, the property stands out through superior quality finishes, luxury furniture and state-of-the-art appliances, complemented by a spacious terrace and an included underground parking space.

An apartment designed for those who make no compromises - modern, fully equipped and perfectly positioned near all the premium amenities of northern Bucharest.

### Layout & Interior Spaces

- Comfortable and bright living room
- 1 spacious bedroom
- Fully furnished and equipped kitchen
- 1 modern bathroom
- Spacious terrace
- Storage spaces

### **Amenities & Features**

- Fully furnished with luxury furniture
- State-of-the-art appliances: fridge, oven, electric hob, dishwasher
- Air conditioning
- Centralized building heating system
- Superior quality finishes and materials
- Brand new building, constructed in 2021

### **Complex Facilities**

- Modern G+5 building, constructed in 2021
- 1 parking space
- Modern elevator
- Well-managed complex

### **Location: Băneasa - Aerogării**

A privileged position in the exclusive Herăstrău – Aviației – Băneasa area, with easy access to:

- Herăstrău Park
- Aviației-Pipera business hub
- Promenada Mall and Băneasa Shopping City
- Metro and public transport network
- Private medical clinics, international schools
- Premium restaurants and sports clubs



## Property details

<b>Rooms no.</b>	2
<b>Constructed surface</b>	65m <sup>2</sup>
<b>Apartment type</b>	Apartment
<b>Type of rooms</b>	Semi-independent
<b>Bedrooms no.</b>	1
<b>Kitchens no.</b>	1
<b>Bathrooms no.</b>	1
<b>Building type</b>	Block
<b>Year built</b>	2021
<b>Config</b>	P+5
<b>Floor</b>	2
<b>Balconies no.</b>	1
<b>State</b>	Finished
<b>Elevator</b>	Yes
<b>Parking inside</b>	1

## Amenities

 Equipped kitchen

 Dishwasher

 Furnished

 Building heating

 Air conditioning



## Location



## Photos

