



Violetta Tudorache

+40 729 005 624

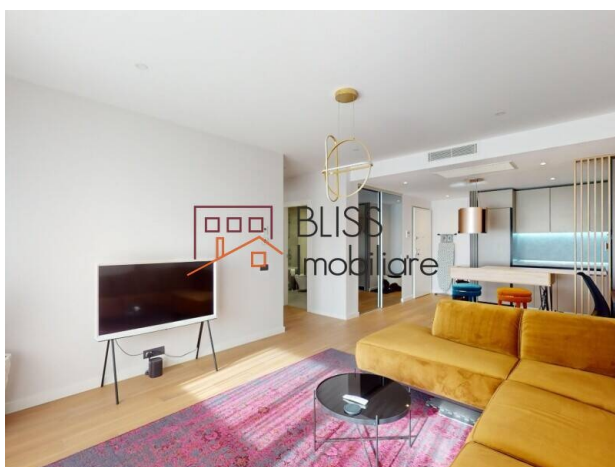
contact@blissimobiliare.ro
(mailto:contact@blissimobiliare.ro)

Updated on 14 October 2025

Modern 1-Bedroom Apartment in One Herăstrău Towers

One Herastrau Towers, Aviatiei Nord,
Bucharest

Web Reference
#125174



<https://www.blissimobiliare.ro/index.php/en/apartment-1-bedroom-for-sale-aviatiei-promenada-mall-metro-pipera-bucharest-125174> (<https://www.blissimobiliare.ro/index.php/en/apartment-1-bedroom-for-sale-aviatiei-promenada-mall-metro-pipera-bucharest-125174>)

Description

1-Bedroom Apartment in One Herăstrău Towers - 70 sqm + 24 sqm Terrace, Fully Furnished, Premium Finishes

Prime Location in Herăstrău – Aviației Area

Experience elevated living in this modern 1-bedroom apartment located on the 2nd floor of one of Bucharest's most exclusive residential developments – One Herăstrău Towers. With a total surface of 70 sqm and a spacious 24 sqm terrace, this property offers the perfect balance of comfort, elegance, and urban accessibility.

High-Quality Comfort and Interior Design

- Functional layout, ideal for contemporary living
- Bright and airy living room with direct access to the generous terrace
- Fully equipped kitchen, elegantly integrated into the open space
- Cozy and stylish bedroom, furnished with premium pieces
- Elegant bathroom with top-quality finishes
- Large terrace – perfect for outdoor relaxation

Premium Features

- High-end furniture and modern appliances
- Contemporary finishes with carefully selected textures and tones
- Air conditioning system
- Floor-to-ceiling windows for natural light throughout the day






Prime Location - Herăstrău / Aviației

- Set in one of the most desirable areas in northern Bucharest:
- Just minutes away from Herăstrău Park and Șoseaua Nordului
- Close to Promenada Mall, fine dining restaurants, cozy cafés, and major business hubs (Barbu Văcărescu – Pipera)
- Fast access to Aurel Vlaicu Metro Station, DN1, and Otopeni Airport

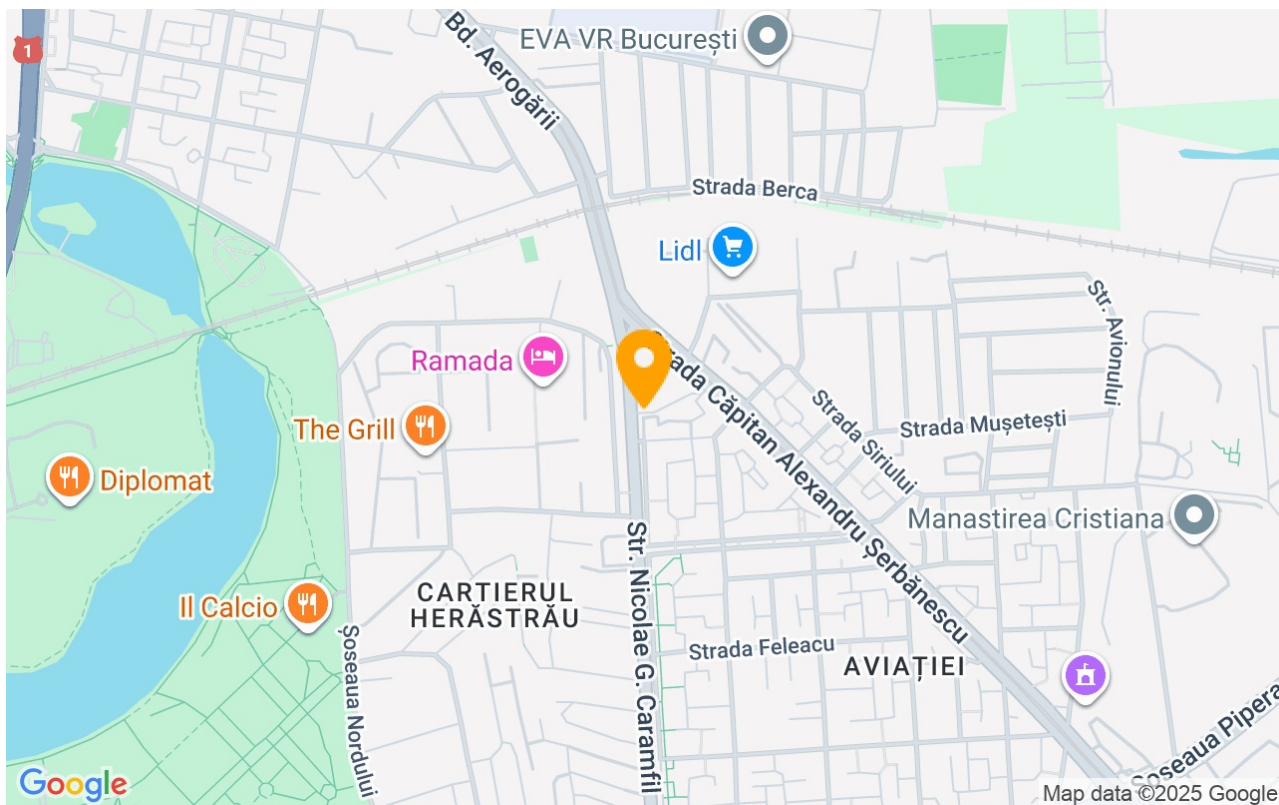
Property details

Rooms no.	2
Useable surface	70m²
Apartment type	Apartment
Type of rooms	Independent
Bedrooms no.	1
Kitchens no.	1
Bathrooms no.	1
Building type	Block
Year built	2021
Config	2S+P+11
Floor	2
Balconies no.	1
State	Finished
Elevator	Yes

Amenities

-  Equipped kitchen
-  Dishwasher
-  Furnished
-  Private heating
-  Air conditioning

Location



Photos

