



**Violetta Tudorache**

+40 729 005 624

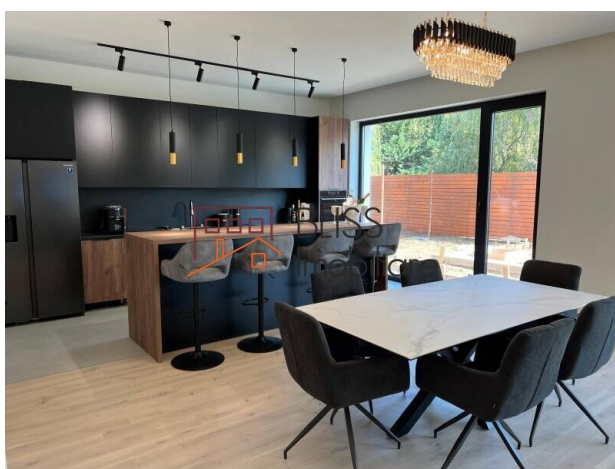
contact@blissimobiliare.ro  
(mailto:contact@blissimobiliare.ro)

Updated on 2 June 2025

## 5-Bedrooms Spacious And Modern Villa

Web Reference  
**#123121**

📍 Iancu Nicolae, Bucharest / Ilfov



<https://www.blissimobiliare.ro/index.php/en/house-5-bedrooms-for-rent-iancu-nicolae-pipera-bucharest-ilfov-123121> (<https://www.blissimobiliare.ro/index.php/en/house-5-bedrooms-for-rent-iancu-nicolae-pipera-bucharest-ilfov-123121>)

### Description

This contemporary and generously sized villa is located in the highly sought-after Pipera – Erou Iancu Nicolae area. Perfect for families or professionals, the property combines modern design, energy efficiency, and proximity to top amenities.

## Close To International Schools And Băneasa Mall

### Interior Layout and Features

- **Ground Floor:**

- A spacious living room, ideal for family gatherings or relaxation.
- A well-located kitchen that can be tailored to your preferences.
- A versatile room that can serve as a guest bedroom or office.
- A stylish bathroom, perfectly designed for everyday use.

- **First Floor:**

- **Master bedroom** with an integrated dressing area and en-suite bathroom for added privacy.
- A second bedroom with a private bathroom, perfect for guests or children.
- **Two additional bedrooms**, sharing a modern and functional bathroom, ideal for a growing family.

### Energy Efficiency and Comfort

- **Underfloor heating** ensures optimal thermal comfort.
- Equipped with a **heat pump system**, offering lower utility costs and environmentally friendly heating and cooling.

### Customization Options

- The villa is currently **unfurnished**, giving you complete freedom to decorate it to suit your style.
- Furnishing options are available upon request.

### Prime Location in Pipera - Erou Iancu Nicolae

- **Top Schools:** Close to prestigious international schools such as the British School of Bucharest and Mark Twain International School.
- **Shopping and Leisure:** Within walking distance of Jolie Ville and Lidl, with Băneasa Mall just minutes away by car.
- **Easy Access:** The area boasts modern infrastructure and excellent connectivity to the city center and Otopeni International Airport.

### A Property That Combines Elegance and Functionality








This villa is the perfect choice for those seeking space, natural light, and a prime location near essential facilities.



### Property details

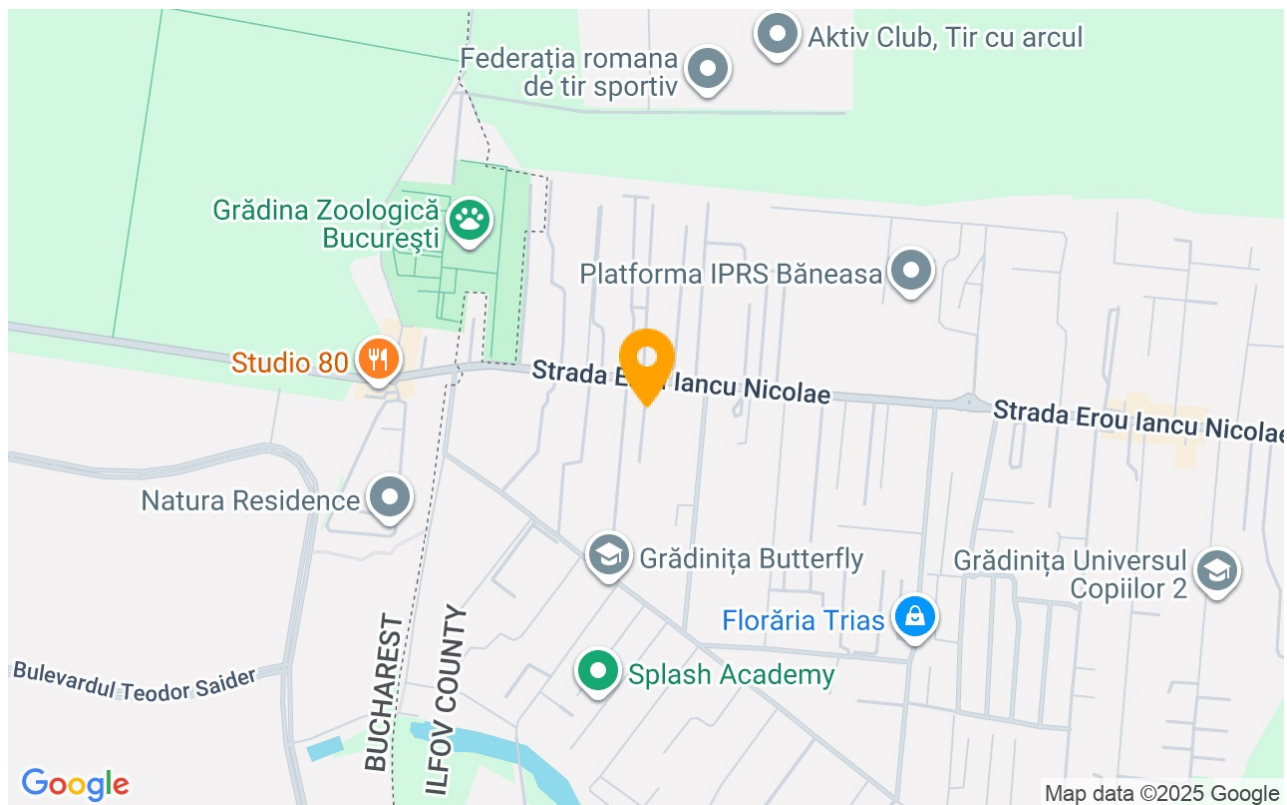
Rooms no.	6
Useable surface	227m <sup>2</sup>
Constructed surface	283m <sup>2</sup>
Bedrooms no.	5
Kitchens no.	1
Bathrooms no.	4
Building type	House
State	Under construction
Total land	300m <sup>2</sup>
Print	100m <sup>2</sup>
Courtyard	200m <sup>2</sup>
Parking outside	1

### Amenities

-  Equipped kitchen
-  Dishwasher
-  Not furnished ( Willing to furnish )
-  Private heating
-  Air conditioning
-  Fireplace
-  Swimming pool



## Location



## Photos

