



**Violetta Tudorache**

+40 729 005 624

contact@blissimobiliare.ro  
(mailto:contact@blissimobiliare.ro)

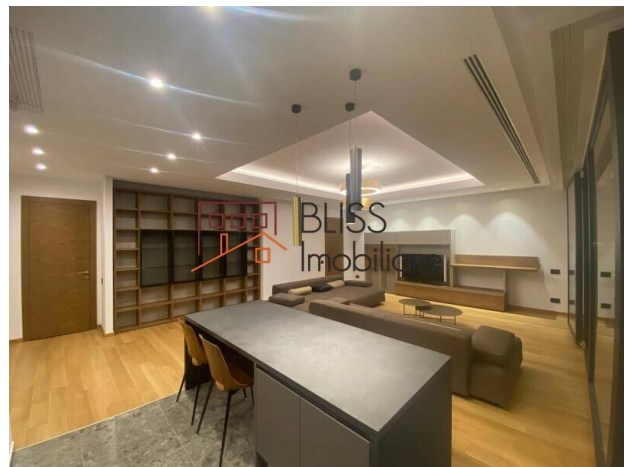
Updated on 26 March 2026

## Exclusive 3-Bedroom Penthouse with Parking

Primaverii, Bucharest

**5,500 EUR +VAT / month**

Web Reference  
**#122234**



<https://www.blissimobiliare.ro/index.php/en/apartment-penthouse-3-bedrooms-for-rent-dorobanti-primaverii-kiseleff-aviatorilor-bucharest-122234>

(<https://www.blissimobiliare.ro/index.php/en/apartment-penthouse-3-bedrooms-for-rent-dorobanti-primaverii-kiseleff-aviatorilor-bucharest-122234>)

### Description

#### Exclusive 3-Bedroom Penthouse - The Heart of Primăverii District, Near Herastrau Park

## Modern Comfort And Elegance In A Building Completed In 2021

We present a distinguished property located in Bucharest's most coveted neighborhood: Primăverii. This spectacular penthouse, situated on the 5th floor of a luxury building completed in 2021, represents the definition of urban refinement, offering a perfect mix between the tranquility of an elite residential area and immediate proximity to the most important points of interest in North Bucharest.

#### Elegant Space and Detached Layout

With a usable area of 147 sqm, the residence impresses with its high-quality finishes and an intelligent layout designed for maximum comfort:

- Living Area: A spacious and bright living room, fully furnished, opening onto a balcony that offers relaxing views of the surrounding area.
- Sleeping Area: Features 3 generous bedrooms, quiet and perfectly suited for rest and privacy.
- Bathrooms: 2 modern bathrooms with premium finishes, plus an additional guest toilet.

## **High-End Amenities and Premium Comfort**

The property benefits from all the advantages of a state-of-the-art new construction:

- **Climate Control:** Air conditioning system and building central heating for optimal thermal efficiency.
- **Kitchen:** Fully equipped with modern appliances, including a dishwasher.
- **Parking:** Includes 1 indoor parking space in the underground garage—a crucial benefit for comfort and security in the Primăverii area.
- **Building Features:** Secured building equipped with a modern elevator and high-quality finishes in all common areas.

## **Location: The Supreme Standard of Living**

The penthouse's positioning is unbeatable, providing rapid access to the city's top facilities:

- **Nature:** Just a 2-minute walk from Herastrau Park and Floreasca Park.
- **Transportation:** Easy access to the Aviatorilor Metro station and the main arterial roads in the North.
- **Lifestyle:** Immediate proximity to the most select restaurants, specialty cafes, and luxury shops within the Dorobanți-Primăverii perimeter.



## Property details

<b>Rooms no.</b>	4
<b>Useable surface</b>	147m <sup>2</sup>
<b>Constructed surface</b>	160m <sup>2</sup>
<b>Apartment type</b>	Penthouse apartment
<b>Type of rooms</b>	Independent
<b>Type of comfort</b>	Comfort 1
<b>Bedrooms no.</b>	3
<b>Kitchens no.</b>	1
<b>Bathrooms no.</b>	2
<b>Toilets no.</b>	1
<b>Building type</b>	Block
<b>Year built</b>	2021
<b>Config</b>	1S+P+5
<b>Floor</b>	5
<b>Balconies no.</b>	1
<b>State</b>	Finished
<b>Elevator</b>	Yes
<b>Parking inside</b>	1

## Amenities

 Equipped kitchen

 Dishwasher

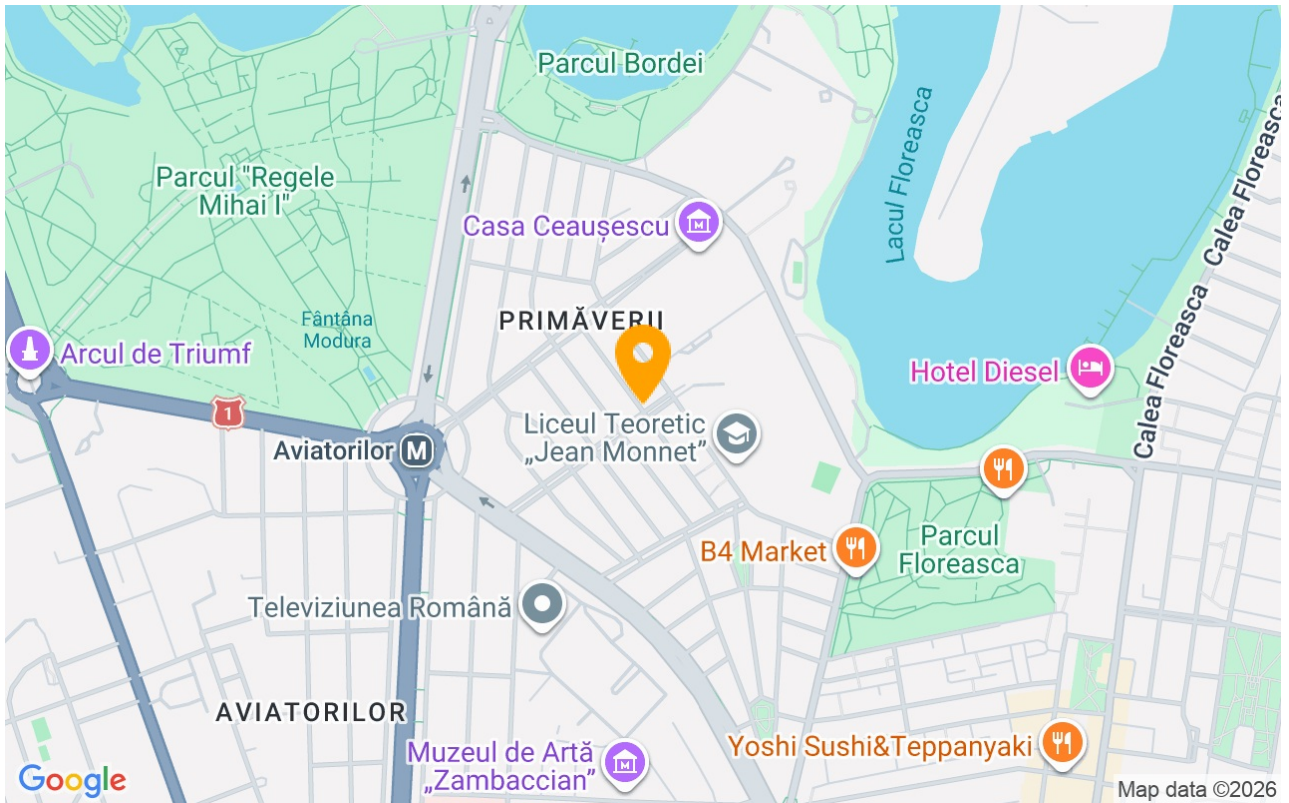
 Furnished

 Building heating

 Air conditioning



## Location



## Photos

