



**Violetta Tudorache**

+40 729 005 624

contact@blissimobiliare.ro  
(mailto:contact@blissimobiliare.ro)

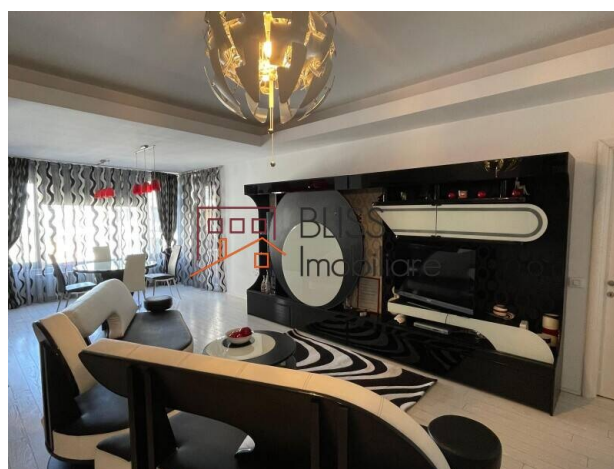
Updated on 4 November 2025

## 2-Bedroom Spacious Apartment in North Area Lake View

North Area Lake View, Aviatiei Sud, Bucharest

**1,150 EUR/ month**

Web Reference  
**#122228**



<https://www.blissimobiliare.ro/index.php/en/apartment-2-bedrooms-for-rent-aviatiei-promenada-mall-metro-pipera-bucharest-122228> (<https://www.blissimobiliare.ro/index.php/en/apartment-2-bedrooms-for-rent-aviatiei-promenada-mall-metro-pipera-bucharest-122228>)

### Description

**2-Bedroom Apartment in North Area Lake View - 120 sqm, Furnished, Parking & Storage**

## Panoramic Views of the Japanese Garden & Quick Access to Herăstrău Park

Discover the elegance and sophistication of this 2-bedroom apartment, located in the exclusive North Area Lake View Herăstrău residential complex, in the heart of Bucharest's northern area - Băneasa. With a usable area of 120 sqm, premium finishes, and a terrace overlooking the complex's Japanese garden, this property offers a unique and refined lifestyle.

### Layout & Interior Spaces

- Bright and spacious living room with modern furniture and access to the terrace
- 2 large bedrooms, including a master bedroom with en-suite bathroom and a generous walk-in dressing room
- Fully furnished and equipped kitchen with premium appliances
- 2 elegant bathrooms, designed with attention to detail
- Terrace with panoramic views of the Japanese garden and nearby skyline towers

### Features & Benefits

- Usable area: 120 sqm
- 6th floor in a modern building with elevator
- Underground parking space and storage room included
- Fully furnished and equipped, contemporary design
- Private terrace with superb views over the illuminated Japanese garden in the evening

### **Premium Location - Herăstrău**

Located in one of the most sought-after areas in northern Bucharest, the apartment offers quick access to:




- Herăstrău Park – 7 minutes walking
- Aurel Vlaicu Metro – 7 minutes
- Promenada Mall – 10 minutes
- Bordei Park – 3 minutes
- Fine restaurants, cafés, international schools, and top business centers



Property details

Rooms no.	3
Useable surface	120m²
Apartment type	Apartment
Type of rooms	Independent
Bedrooms no.	2
Kitchens no.	1
Bathrooms no.	2
Building type	Block
Year built	2009
Config	1S+P+9
Floor	6
Balconies no.	1
State	Finished
Elevator	Yes
Parking inside	1
Storage no.	1
Earthquake risk class	Unclassified

Amenities

-  Equipped kitchen
-  Furnished
-  Air conditioning



## Location



## Photos

