



Violetta Tudorache

+40 729 005 624

contact@blissimobiliare.ro
(mailto:contact@blissimobiliare.ro)

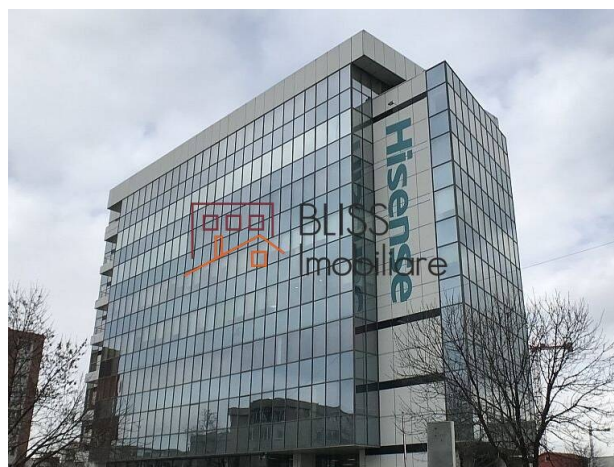
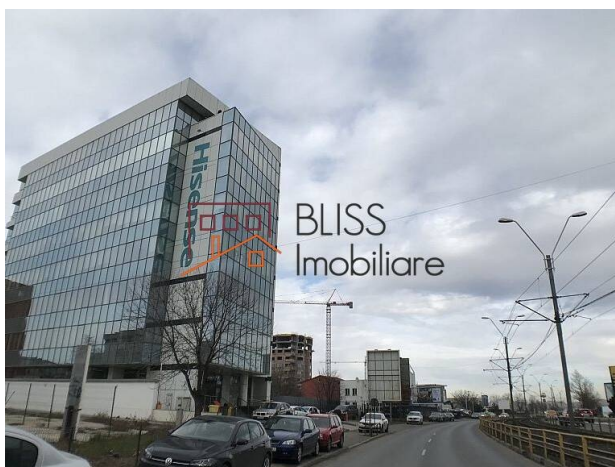
Updated on 19 August 2024

office space

📍 Virtuții Business Center, Virtutii, Bucharest

1,829 EUR +VAT / month

Web Reference
#121701



<https://www.blissimobiliare.ro/index.php/en/office-space-for-rent-virtutii-bucharest-121701>
(<https://www.blissimobiliare.ro/index.php/en/office-space-for-rent-virtutii-bucharest-121701>)

Description

Office space with an area of 329 sqm, located on the 1st floor in Virtutii Business Center.

The Virtutii 19D building is a strategic location, situated on Soseaua Virtutii, just 900 meters from the Lujerului Passage, in the immediate vicinity of the intersection of Soseaua Virtutii and Bulevardul Iuliu Maniu and 1.3 km from Piata Crângasi.

Located near the Morii Lake and the new Ciurel overpass, the building benefits from a diversified and dynamic urban environment.

The surrounding area has developed considerably over the last 10-15 years, offering a wide range of amenities, including a major shopping centre just 10-15 minutes' walk away, including Cora Lujerului, Plaza Romania, Piata Crângasi, supermarkets and discounters.

Easy access by car is provided from Soseaua Virtutii, in the direction from Piata Crângasi to Lujerului Passage, via a fast artery with 2 lanes in each direction and a central tram line. The road provides a direct connection with Bulevardul Iuliu Maniu, Bulevardul Timisoara and Calea Crangasi - Grant Bridge, facilitating quick access to the west, centre and north of the capital.




Public transport is easily accessible, with two metro stations within a 10-minute walk from the building: Petrache Poenaru - Semanatoarea (Magistrala M1) and Lujerului (Magistrala M3). In addition, the easy metro line 41 and bus lines are available within a 2-minute walk from the building.

The Virtuții 19D building spans basement, ground floor and 7 floors, with a total leasable area of 4,000 m², with 517 m² on each floor. It offers both underground and outdoor parking, providing a convenient and friendly environment for employees and visitors.

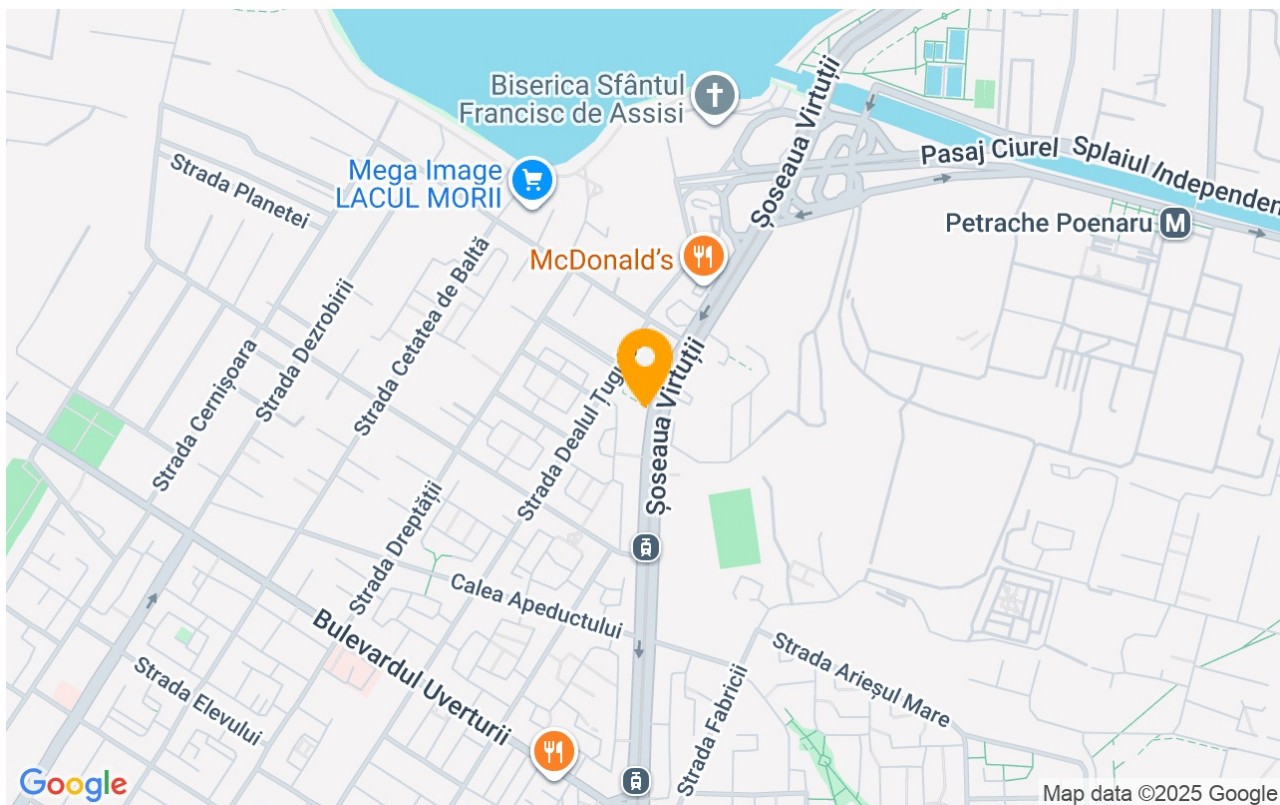
Property details

Constructed surface	193m²
Kitchens no.	1
Bathrooms no.	1
Building type	Block
Year built	2009
State	Finished
Elevator	Yes
Common service charges	577.00 EUR

Amenities

-  Not furnished
-  Suitable for office
-  Air conditioning

Location



Photos

