



**Violetta Tudorache**

+40 729 005 624

contact@blissimobiliare.ro  
(mailto:contact@blissimobiliare.ro)

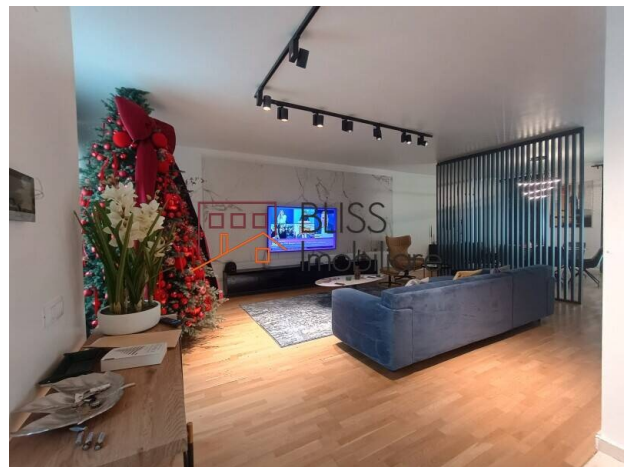
Updated on 9 July 2026

## ultramodern 4-bedroom villa

Rafael Little London, Iancu Nicolae, Bucharest / Ilfov

**5,000 EUR/ month**

Web Reference  
**#117563**



<https://www.blissimobiliare.ro/index.php/en/house-4-bedrooms-for-rent-iancu-nicolae-pipera-bucharest-ilfov-117563> (<https://www.blissimobiliare.ro/index.php/en/house-4-bedrooms-for-rent-iancu-nicolae-pipera-bucharest-ilfov-117563>)

### Description

BLISS Imobiliare presents a premium 4-bedroom villa with floor plan P+1+M, located in the exclusive residential complex Rafael Little London, Erou Iancu Nicolae area.

## The villa has a unique and ultramodern design.

The villa immediately stands out and stands out from the other options in the area thanks to its special architecture and decoration according to the latest trends.

It has a usable area of 360 square meters and is located on a plot of 200 square meters, having a private garden with lawn, ornamental shrubs and a canopy, and a terrace designed for outdoor moments of relaxation.

The ground floor is composed of a generous and bright living room with a fireplace, which integrates the dining area and the fully equipped open space kitchen, a storage space and a bathroom.

The first floor has a master bedroom with a bathroom and 2 other bedrooms with a shared bathroom, and the top floor includes an open space arranged as an office and relaxation space.

The entire villa is furnished and decorated in an ultramodern, unique style, each room having a separate personality.

Both the interior and exterior finishes are of very good quality. The building benefits from triple-layered wooden parquet, marble and granite, Marazzi Italia tiles and tiles, its own central heating system, underfloor heating with electronic thermostat in each room, air conditioning and 2 parking spaces.

The exceptional positioning of the villa offers quick access to a variety of facilities and services of superior quality. For example, just 2 minutes by car, you will find the Jollie Ville shopping center. Baneasa Shopping City, with the most exclusive shops and fine restaurants, is only 9 minutes away, Promenada Mall 17 minutes away, thus offering a varied range of shops, entertainment and restaurants.

Because education is very important, the area benefits from an impressive number of top schools and kindergartens, such as the American International School 6 minutes away, the British School of Bucharest 2 minutes away, the Mark Twain High School 1 minute away by car or 7 minutes on foot, and the Cambridge School of Bucharest is also one minute away by car or a maximum of 9 on foot. These are just a few examples of nearby schools, and the list goes on.

Padurea Baneasa is nearby, as well as numerous other stores, such as Mega Image, Lidl, Profi Market, Carrefour, and restaurants. Another advantage of the area is that Henri Coandă International Airport is a 13-minute drive away.

The bus stop is only a 1-minute walk away and has a direct connection to the Pipera metro station.

Thus, this superb villa is ideal for those who want to have a sophisticated lifestyle in an exclusive paradise, where elegance and comfort harmoniously intertwine.



## Property details

<b>Rooms no.</b>	6
<b>Useable surface</b>	360m <sup>2</sup>
<b>Constructed surface</b>	430m <sup>2</sup>
<b>Bedrooms no.</b>	4
<b>Kitchens no.</b>	1
<b>Bathrooms no.</b>	3
<b>Toilets no.</b>	1
<b>Building type</b>	House
<b>Year built</b>	2021
<b>Balconies no.</b>	3
<b>State</b>	Finished
<b>Total land</b>	200m <sup>2</sup>
<b>Print</b>	135m <sup>2</sup>
<b>Courtyard</b>	60m <sup>2</sup>
<b>Parking outside</b>	2

## Amenities

 Equipped kitchen

 Dishwasher

 Furnished

 Private heating

 Air conditioning

 Fireplace



## Location



## Photos

