



**Violetta Tudorache**

+40 729 005 624

contact@blissimobiliare.ro  
(mailto:contact@blissimobiliare.ro)

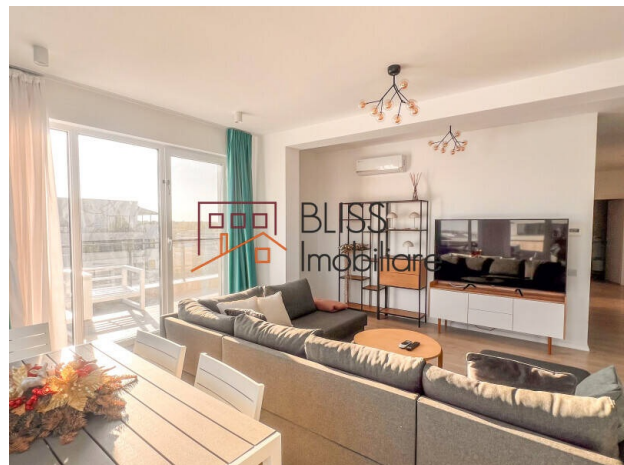
Updated on 3 March 2026

## 2-Bedroom Penthouse with 2 Large Terraces & Jacuzzi

**1,500 EUR/ month**

Web Reference  
**#109552**

New Point (Apartments), Pipera Nord,  
Bucharest / Ilfov



<https://www.blissimobiliare.ro/index.php/en/apartment-penthouse-2-bedrooms-for-rent-iancu-nicolae-pipera-bucharest-ilfov-109552> (<https://www.blissimobiliare.ro/index.php/en/apartment-penthouse-2-bedrooms-for-rent-iancu-nicolae-pipera-bucharest-ilfov-109552>)

### Description

BLISS Imobiliare presents a 2 bedroom penthouse located on the 9th floor of a new building, with a superb view in the New Point complex, the newest Residential Apartment Complex in Pipera.

## Two bedrooms, two bathrooms and premium features in a modern compound

Located in an area in continuous development and expansion, the project promises those who want to live in a modern and comfortable space.

The penthouse has a constructed area of 147 square meters, consisting of:

- Very spacious and modernly furnished living room, with fully equipped open kitchen, including dishwasher;
- 2 bedrooms with plenty of natural light, one of which has a dressing room;
- 2 bathrooms with shower cabin, respectively bathtub;
- 2 large balconies of 22sqm and 25 sqm, with direct access from the living room, jacuzzi on the terrace;

It is fully furnished and equipped with very good taste and with the best quality objects.

Among the facilities, we mention an outdoor parking space and the individual heating system and air conditioning for your comfort.

The tranquility and detachment offered by the positioning in the suburbs of the capital but at the same time the accessibility to all the points of interest necessary for the contemporary lifestyle.

The most sought-after international schools in Bucharest can be found in the area, namely: the American School, the British School, the Olga Gudynn International School, the Mark Twain International School and the Cambridge School.



## Property details

<b>Rooms no.</b>	3
<b>Useable surface</b>	85m <sup>2</sup>
<b>Constructed surface</b>	147m <sup>2</sup>
<b>Apartment type</b>	Penthouse apartment
<b>Type of rooms</b>	Semi-independent
<b>Type of comfort</b>	Deluxe
<b>Bedrooms no.</b>	2
<b>Kitchens no.</b>	1
<b>Bathrooms no.</b>	2
<b>Building type</b>	Block
<b>Year built</b>	2020
<b>Config</b>	1S+P+9
<b>Floor</b>	9
<b>Balconies no.</b>	2
<b>State</b>	Finished
<b>Elevator</b>	Yes
<b>Parking outside</b>	1

## Amenities

 Equipped kitchen

 Dishwasher

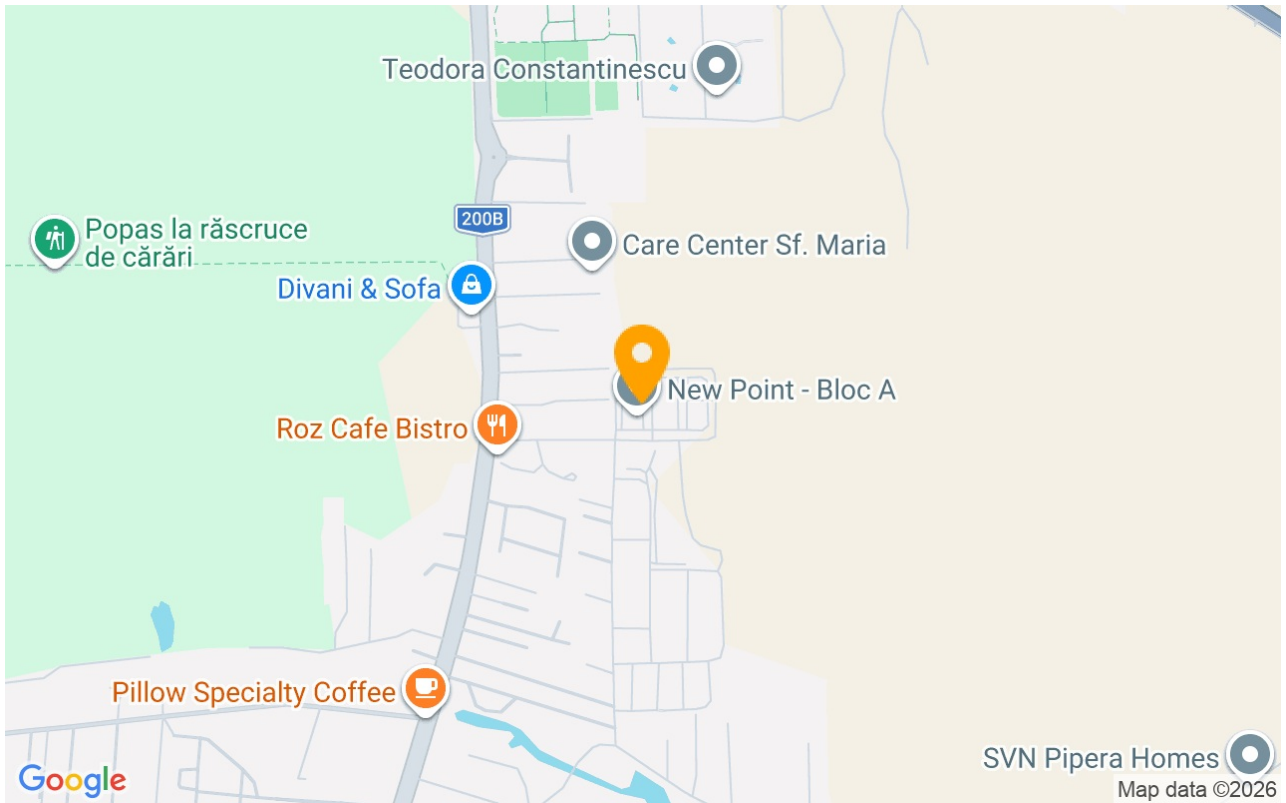
 Furnished

 Private heating

 Air conditioning



## Location



## Photos

