



**Violetta Tudorache**

+40 729 005 624

contact@blissimobiliare.ro  
(mailto:contact@blissimobiliare.ro)

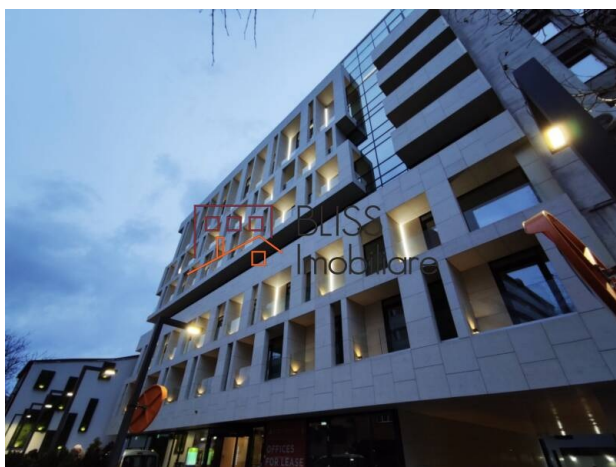
Updated on 30 October 2025

## Office space

📍 Eminescu Office, Eminescu, Bucharest

**2,870 EUR +VAT / month**

Web Reference  
**#109422**



<https://www.blissimobiliare.ro/index.php/en/office-space-for-rent-eminescu-bucharest-109422>  
(<https://www.blissimobiliare.ro/index.php/en/office-space-for-rent-eminescu-bucharest-109422>)

## Description

### 4th Floor - 205 sqm in Eminescu Office

## Central location and flexible configuration

The 4th floor of Eminescu Office offers 205 sqm of modern office space in one of Bucharest's most desirable central areas – between Piața Romană and Dorobanți.

The unit is delivered in Shell & Core condition, with all technical connections installed (electricity, HVAC, plumbing, data) and raised flooring ready for final finishes and layout customization.

This setup allows tenants to create a tailor-made workspace, perfectly aligned with their operational and branding needs.

Upon request, the landlord can carry out a full fit-out, with the costs reflected in the base rent, ensuring a smooth, turnkey solution and minimal upfront investment.

The building features modern elevators, centralized HVAC, controlled access, and dedicated parking.

Its central position on Mihai Eminescu Street provides excellent visibility and access to public transport, services, and top business amenities.

### Technical specifications:

- Total area: 205 sqm

- Floor: 4 / 7
- Delivery condition: Shell & Core
- Raised flooring
- All utility connections installed (electricity, HVAC, plumbing, data)
- Optional full fit-out by the landlord
- Modern elevators, controlled access, central HVAC
- Parking spaces available
- Modern building, centrally located

**Conclusion:**




The 4th-floor office in Eminescu Office offers a highly flexible, customizable workspace with the option for a turnkey fit-out solution, perfectly suited for companies seeking a central, efficient, and modern office environment in Bucharest's premium business area.



Property details

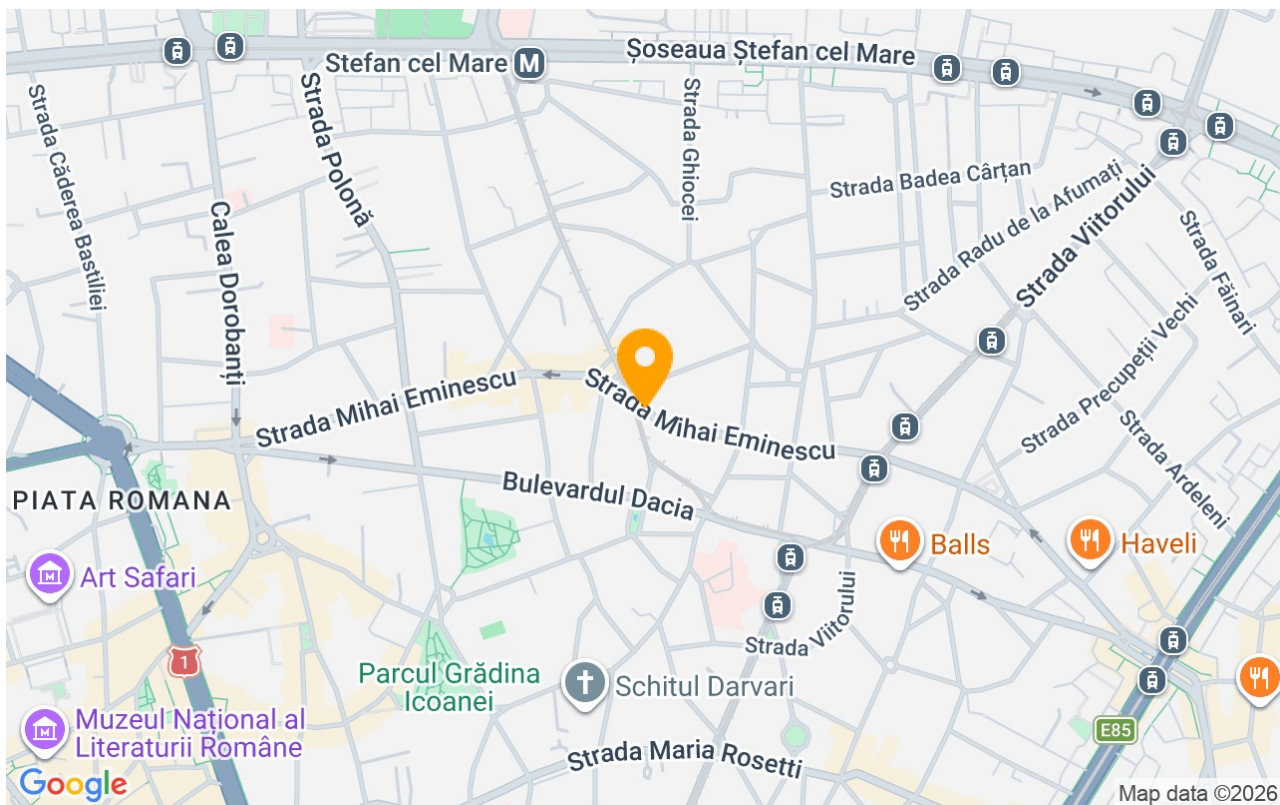
Constructed surface	205m²
Building type	Block
Year built	2016
State	Finished
Elevator	Yes
Common service charges	861.00 EUR

Amenities

-  Not furnished
-  Building heating
-  Suitable for office



## Location



## Photos

