



**Violetta Tudorache**

+40 729 005 624

contact@blissimobiliare.ro  
(mailto:contact@blissimobiliare.ro)

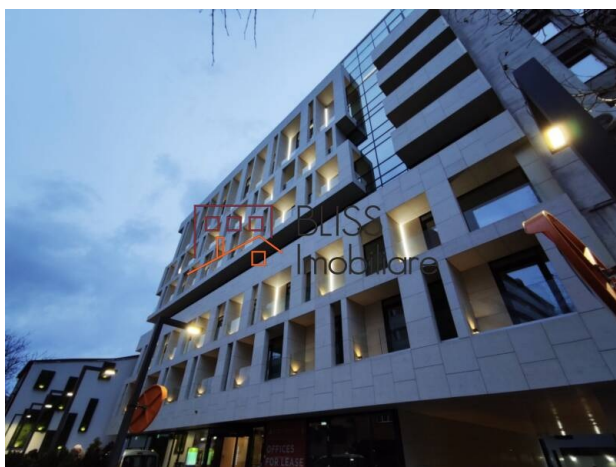
Updated on 30 October 2025

## Office space

📍 Eminescu Office, Eminescu, Bucharest

**4,200 EUR +VAT / month**

Web Reference  
**#109418**



<https://www.blissimobiliare.ro/index.php/en/office-space-for-rent-eminescu-bucharest-109418>  
(<https://www.blissimobiliare.ro/index.php/en/office-space-for-rent-eminescu-bucharest-109418>)

## Description

### 5th Floor - 300 sqm in Eminescu Office

## Central location and flexible modern layout

The 5th floor of Eminescu Office offers 300 sqm of modern office space, ideal for companies seeking a customizable and efficient working environment in a central Bucharest location.

The space is delivered in Shell & Core condition, with all technical connections in place (electricity, HVAC, plumbing, data cabling) and a raised flooring system ready for finishing and layout implementation.

This configuration allows tenants to fully design and tailor the interior according to their operational and branding requirements.

Upon request, the landlord can handle the full fit-out works, with the related costs reflected in the base rent, offering flexibility and convenience for tenants looking for a turnkey office solution.

The building provides modern lifts, centralized HVAC, controlled access, and dedicated parking spaces.

Located on Mihai Eminescu Street, near Piața Romană and Dorobanți, it ensures excellent visibility and connectivity to all major business and residential areas in central Bucharest.

### Technical specifications:

- Total area: 300 sqm
- Floor: 5 / 7
- Delivery condition: Shell & Core
- Raised flooring and all utility connections in place
- Optional full fit-out by the landlord
- Modern HVAC system, controlled access, elevators
- Parking spaces available
- Prime central location

**Conclusion:**




The 5th-floor office within Eminescu Office combines flexibility, modern infrastructure, and central positioning, offering companies the opportunity to create a fully customized and ready-to-use workspace in one of Bucharest's most desirable business areas.



Property details

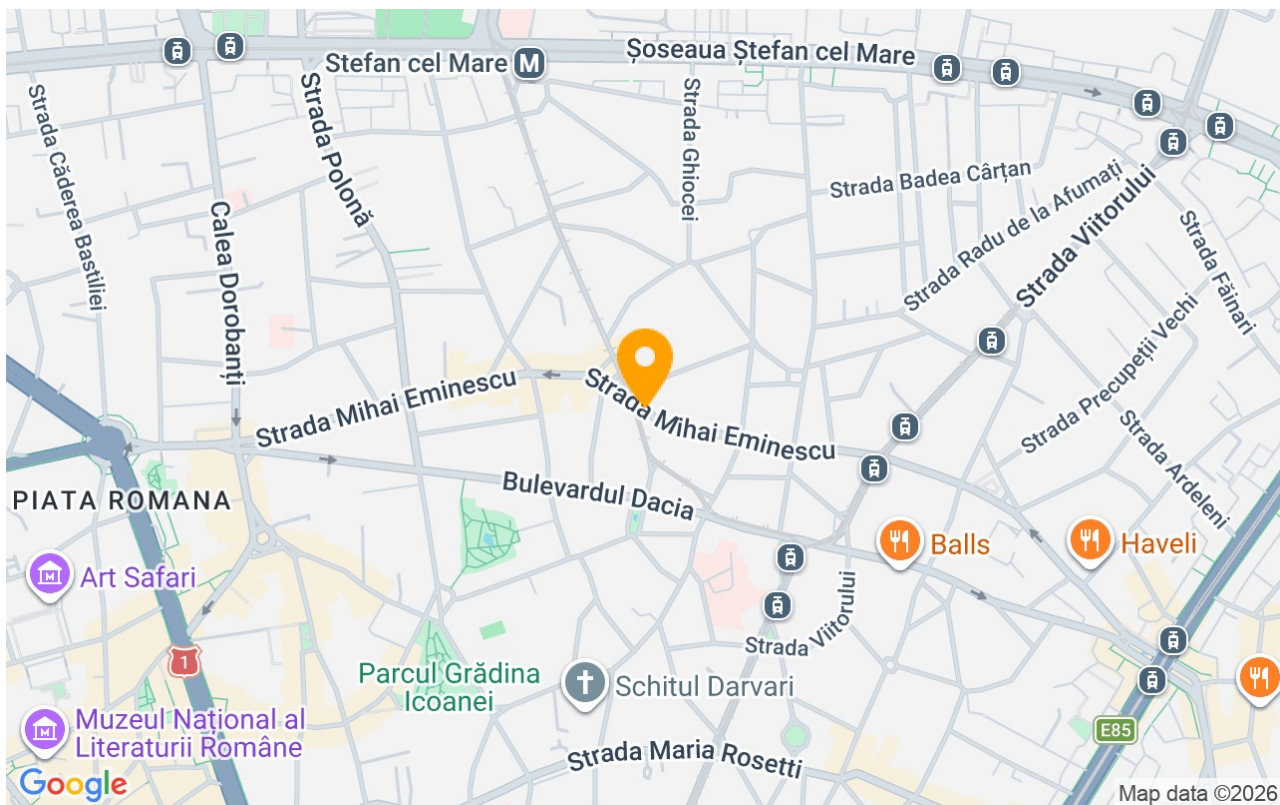
Constructed surface	300m²
Building type	Block
Year built	2016
State	Finished
Elevator	Yes
Common service charges	1260.00 EUR

Amenities

-  Not furnished
-  Building heating
-  Suitable for office



## Location



## Photos

