



**Violetta Tudorache**

+40 729 005 624

contact@blissimobiliare.ro  
(mailto:contact@blissimobiliare.ro)

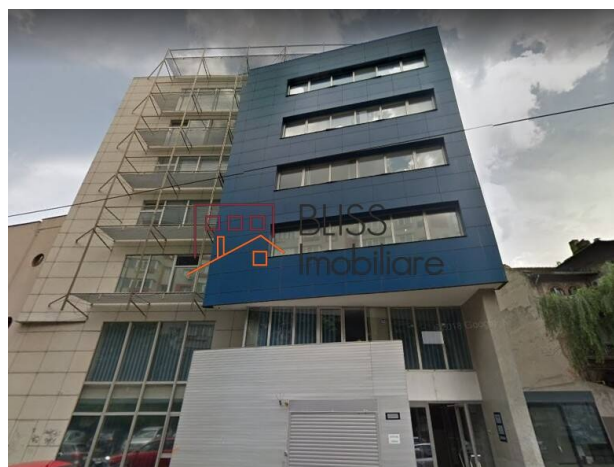
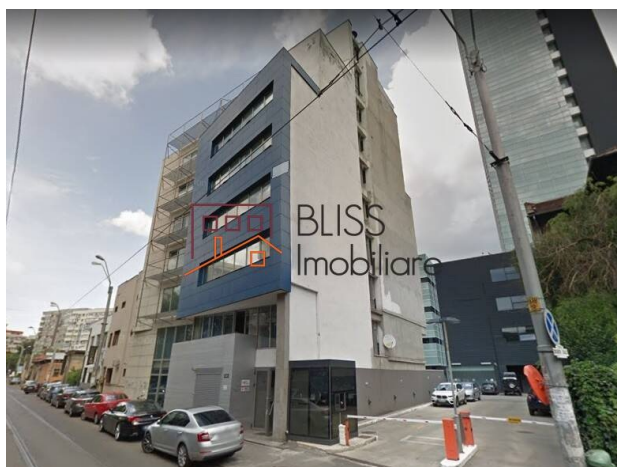
Updated on 6 October 2025

## office space

📍 Dr. Felix 70, Piata Victoriei, Bucharest

**1,991 EUR +VAT / month**

Web Reference  
**#108432**



<https://www.blissimobiliare.ro/index.php/en/office-space-for-rent-piata-victoriei-bucharest-108432>  
(<https://www.blissimobiliare.ro/index.php/en/office-space-for-rent-piata-victoriei-bucharest-108432>)

## Description

Space with an area of 181 square meters, located on the 8th floor, in an office building located in the area of Victoria Square, the main concentration of offices in the center of Bucharest.

Felix 70 is an office building located in the area of Victoria Square, the main concentration of offices in the center of Bucharest.

The building is located on Doctor Felix Street, near Bucharest Tower Center, in the section between Ion Mihalache Boulevard (150 meters) and Nicolae Titulescu Road - America House (250 meters).

The vicinity of the building has mixed functions, including office buildings, residential stock, administrative offices, shops and restaurants, Kiseleff Park, museums, etc.

The accessibility of the building is very good, benefiting from the transport facilities by car and public transport in the area of Victoria Square. Public transport includes Victoriei metro station 7 minutes walk from the building, bus and tram stations located 2-5 minutes walk, ensuring connection with all areas of the capital.

Felix 70 is a class B office building, located in the basement, ground floor and 7 floors. The total leasable area of the building is approximately 2,000 m2, with a current floor area of 228 m2 (190 usable m2).

Space specifications include suspended ceiling, fan coil units (2 pipes) and air conditioning, open windows, 24/7 security, reception, etc. The building does not benefit from dedicated parking spaces.





**Property details**

Constructed surface	181m²
Building type	Block
Year built	1999
State	Finished
Elevator	Yes
Common service charges	724.00 EUR

**Amenities**

-  Not furnished
-  Suitable for office



## Location

