



Violetta Tudorache

+40 729 005 624

contact@blissimobiliare.ro
(mailto:contact@blissimobiliare.ro)

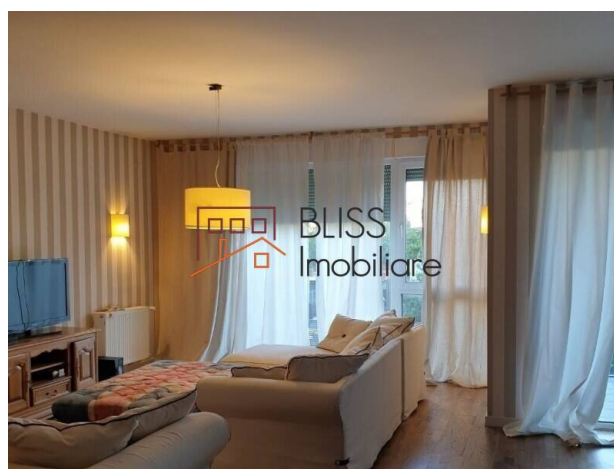
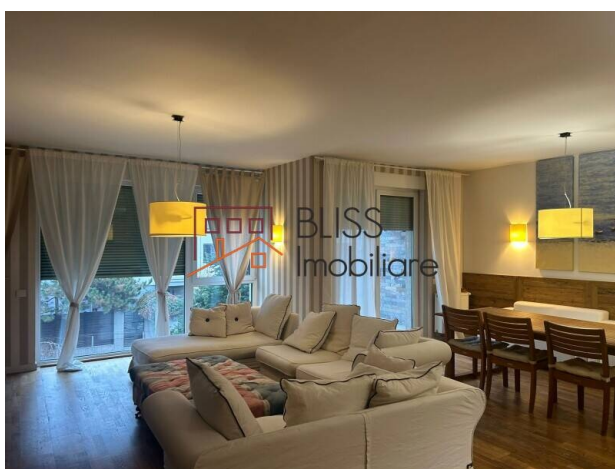
Updated on 26 November 2024

Comfortable Apartment With 2 Bedrooms

📍 Ambiance Residence, Vatra Noua, Bucharest

1,008 EUR +VAT / month

Web Reference
#107423



<https://www.blissimobiliare.ro/index.php/en/apartment-2-bedrooms-for-rent-baneasa-sisesti-jandarmerie-straulesti-sector-1-bucharest-107423>

(<https://www.blissimobiliare.ro/index.php/en/apartment-2-bedrooms-for-rent-baneasa-sisesti-jandarmerie-straulesti-sector-1-bucharest-107423>)

Description

Discover a sophisticated apartment located in an exclusive residential complex in the Sisești area—perfect for those who seek comfort, security, and access to modern facilities. This apartment boasts high-end finishes and contemporary interior design, fully furnished to offer an elegant and relaxed lifestyle.

Close To Green Spaces And Urban Facilities

Key Features:

- **Generous space and optimal layout:** The apartment features a very spacious living room, ideal for relaxation or social gatherings.
- **Modern kitchen:** Fully furnished and equipped, the kitchen stands out with functional design and high-quality appliances.
- **2 bedrooms with en-suite bathrooms:** The bedrooms are comfortable and come with their own bathrooms, ensuring maximum privacy and comfort.
- **3 balconies with open views:** Enjoy beautiful views from the three spacious balconies, perfect for savoring outdoor relaxation moments.
- **Underground parking:** The apartment benefits from 2 underground parking spaces, with additional parking available in the complex's outdoor parking area.

Additional Amenities:





- **Security and video surveillance:** The complex is equipped with a video surveillance system, providing residents with an elevated level of security.
- **Luxury finishes and high-end features:** From refined decor details to top-quality materials, the apartment reflects a high standard of luxury and sophistication.

The Siseşti area is well-known for easy access to urban facilities and green spaces, ensuring an ideal balance between modern living and the tranquility of an elite residential neighborhood.

Property details

Rooms no.	3
Useable surface	170m²
Constructed surface	196m²
Apartment type	Apartment
Type of rooms	Independent
Type of comfort	Comfort 1
Bedrooms no.	2
Kitchens no.	1
Bathrooms no.	2
Toilets no.	1
Building type	Block
Year built	2021
Config	1S+P+7
Floor	1
Balconies no.	2
State	Finished
Elevator	Yes
Parking inside	2
Earthquake risk class	Unclassified

Amenities

-  Equipped kitchen
-  Furnished
-  Private heating
-  Air conditioning

Location



Photos

