



Violetta Tudorache

+40 729 005 624

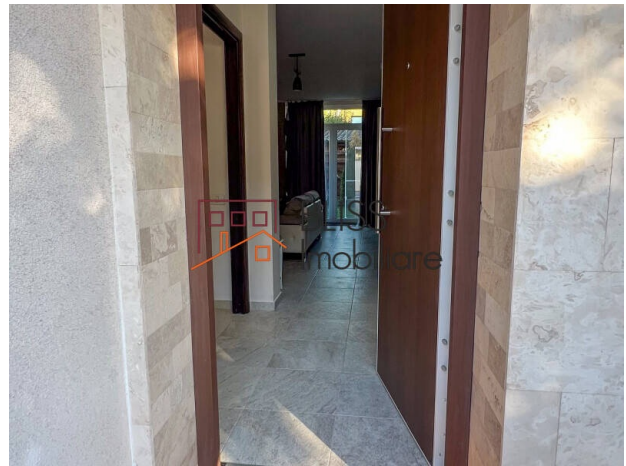
contact@blissimobiliare.ro
(mailto:contact@blissimobiliare.ro)

Updated on 24 October 2025

Modern 3 bedrooms Villa with private garden in Voluntari

Web Reference
#103355

Avangarde Forest 5, Popasului | Padurea Cretuleasca | Matei Millo, Bucharest / Ilfov



<https://www.blissimobiliare.ro/index.php/en/house-3-bedrooms-for-rent-iancu-nicolae-pipera-bucharest-ilfov-103355> (<https://www.blissimobiliare.ro/index.php/en/house-3-bedrooms-for-rent-iancu-nicolae-pipera-bucharest-ilfov-103355>)

Description

BLISS Imobiliare presents a perfect home for your family that is defined by the safety, comfort and welcoming atmosphere of the community.

Near the A3 highway, close to private international schools

The villa is built in 2018 and has a built area of 221 sqm with a land of 125 sqm (footprint 70 sqm) and a cozy private garden of 35 sqm.

Fully furnished and equipped, you benefit from a modern home, the surface being divided as follows:

- On the ground floor there is a generous modern living room with a dining area, a fully equipped kitchen and in the immediate vicinity you have a guest toilet and stairs to the first floor;
- The first floor has three spacious bedrooms with lots of natural light and two bathrooms, one of which is private for the master bedroom;
- A spacious attic and a bathroom with shower
- A balcony.

As a plus, there are two parking places available in front of the house for your vehicles.

The property is located in a closed complex in the Matei Millo Voluntari area near the A3 highway, in the popular Pipera district with the most popular international private schools in Bucharest.

Excellent location, this area being very popular with expats and their families. you have easy access to the city of Bucharest and the highway to Ploiesti crossing the Bucharest ring road.

Property details

Rooms no.	5
Useable surface	190m ²
Constructed surface	221m ²
Bedrooms no.	3
Kitchens no.	1
Bathrooms no.	3
Building type	House
Year built	2018
State	Finished
Total land	125m ²
Print	70m ²
Courtyard	35m ²
Parking outside	2


Amenities


 Equipped kitchen

 Dishwasher

 Furnished

 Private heating

 Suitable for office

 Air conditioning

Location



Photos

